

*Plan of Barcelona Pavilion, 1929. Shaded areas are pools lined with black glass. (Courtesy, Mies van der Rohe)*





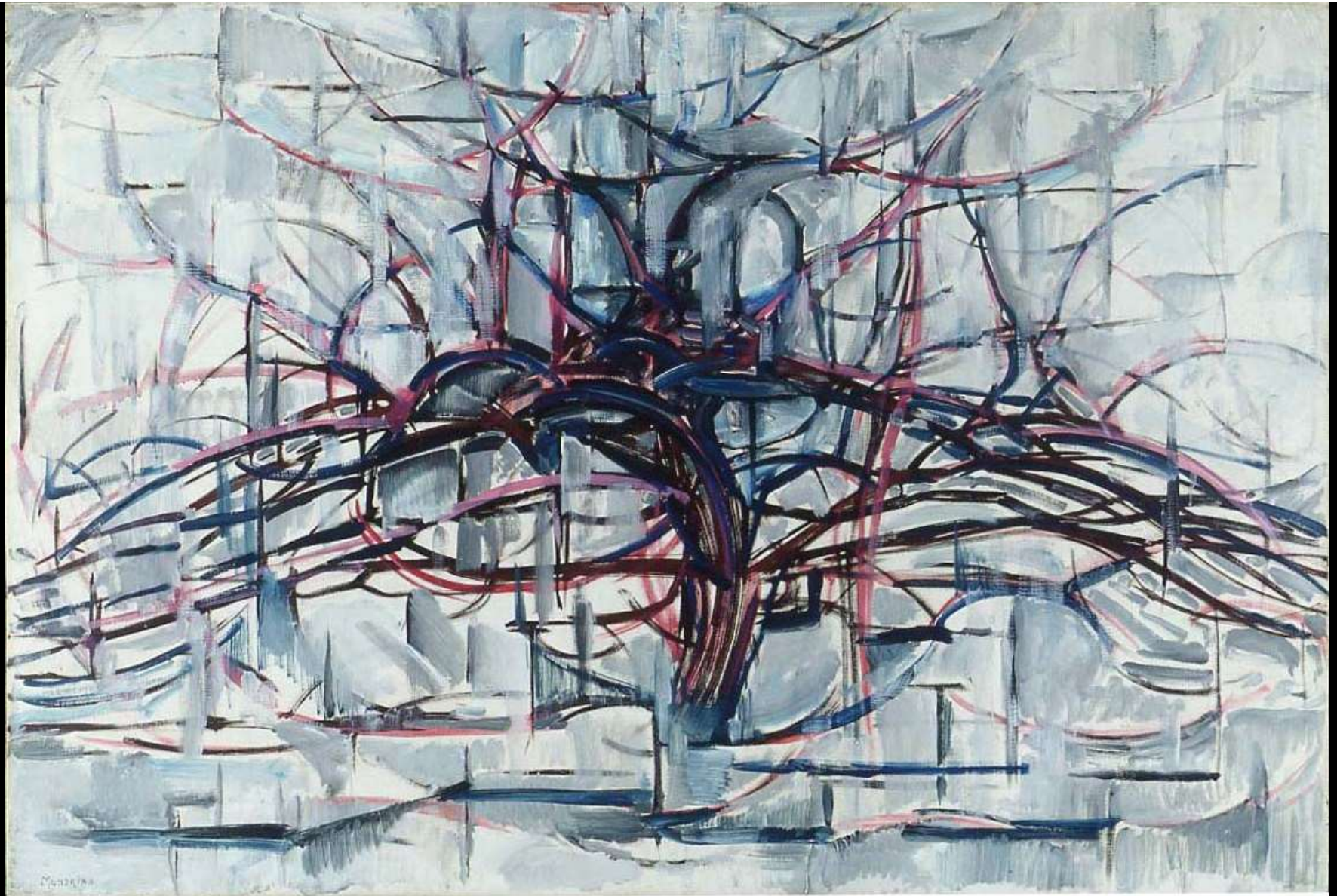








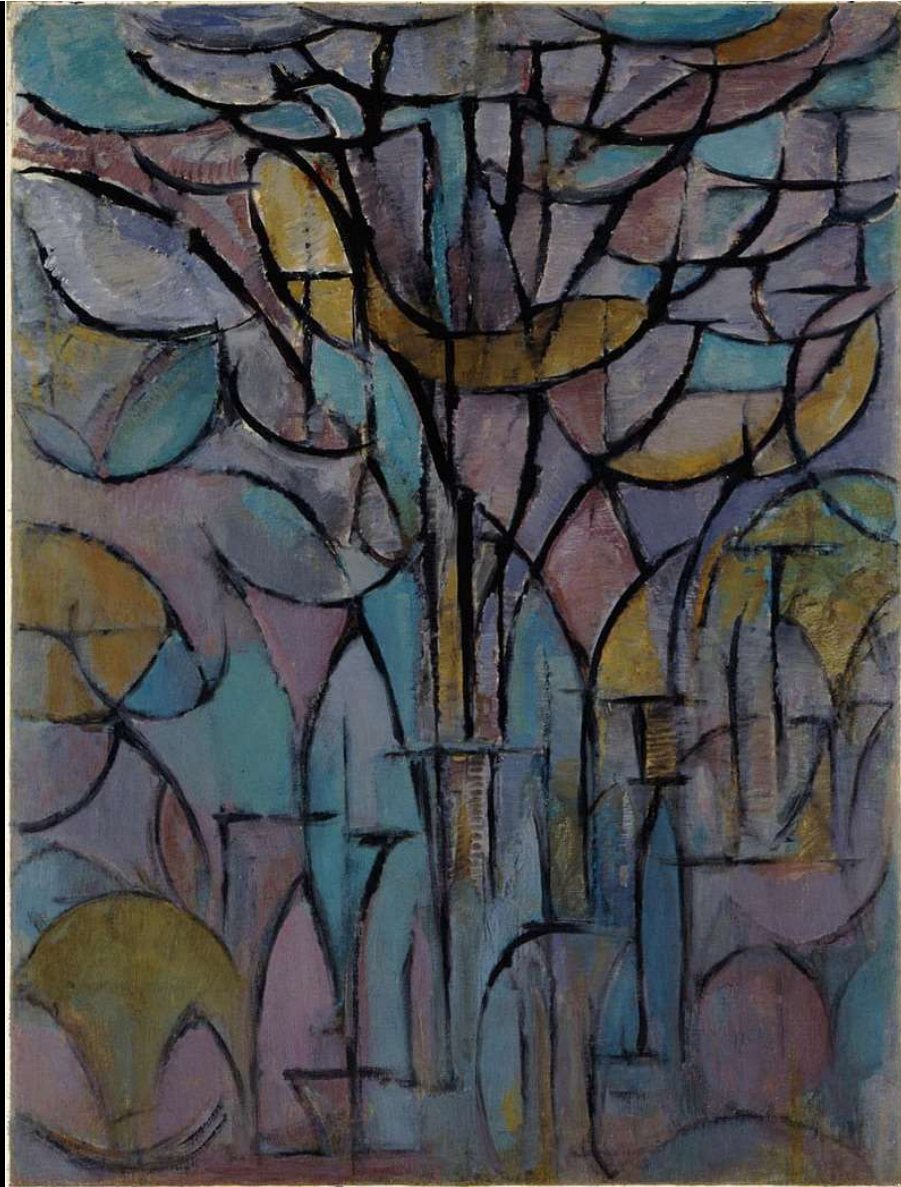










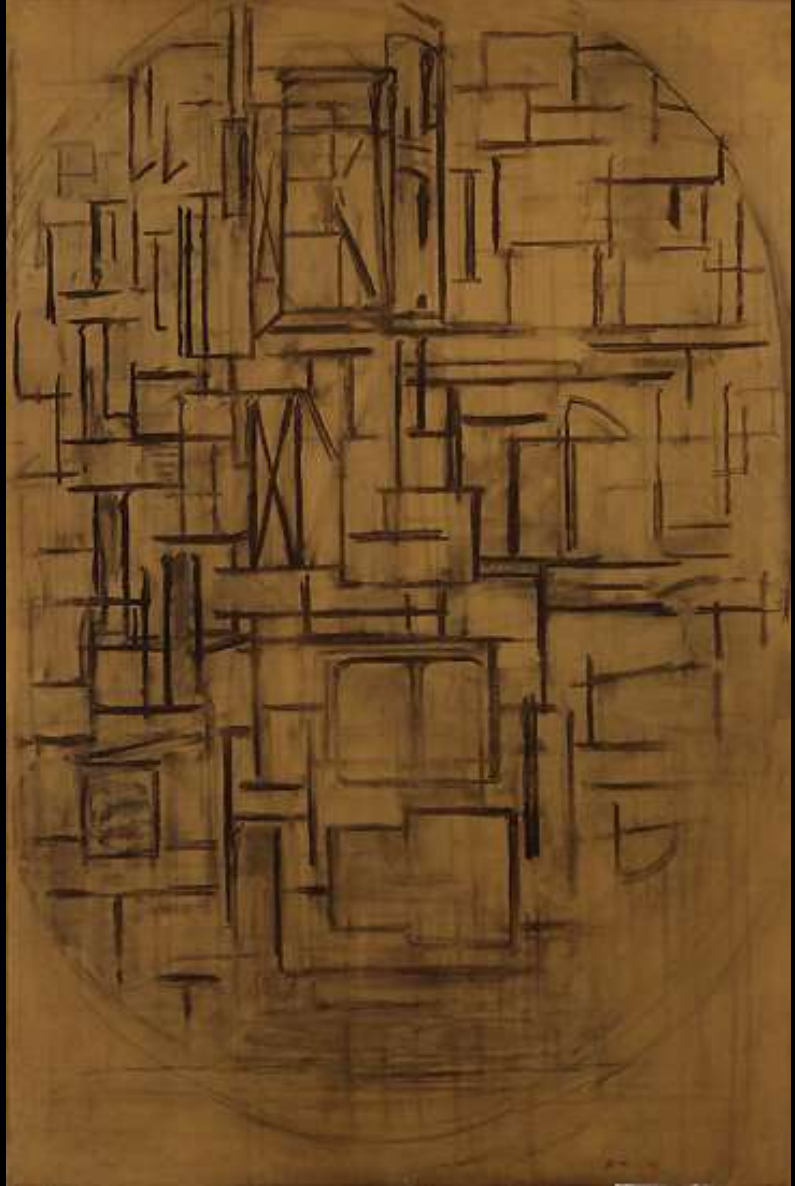


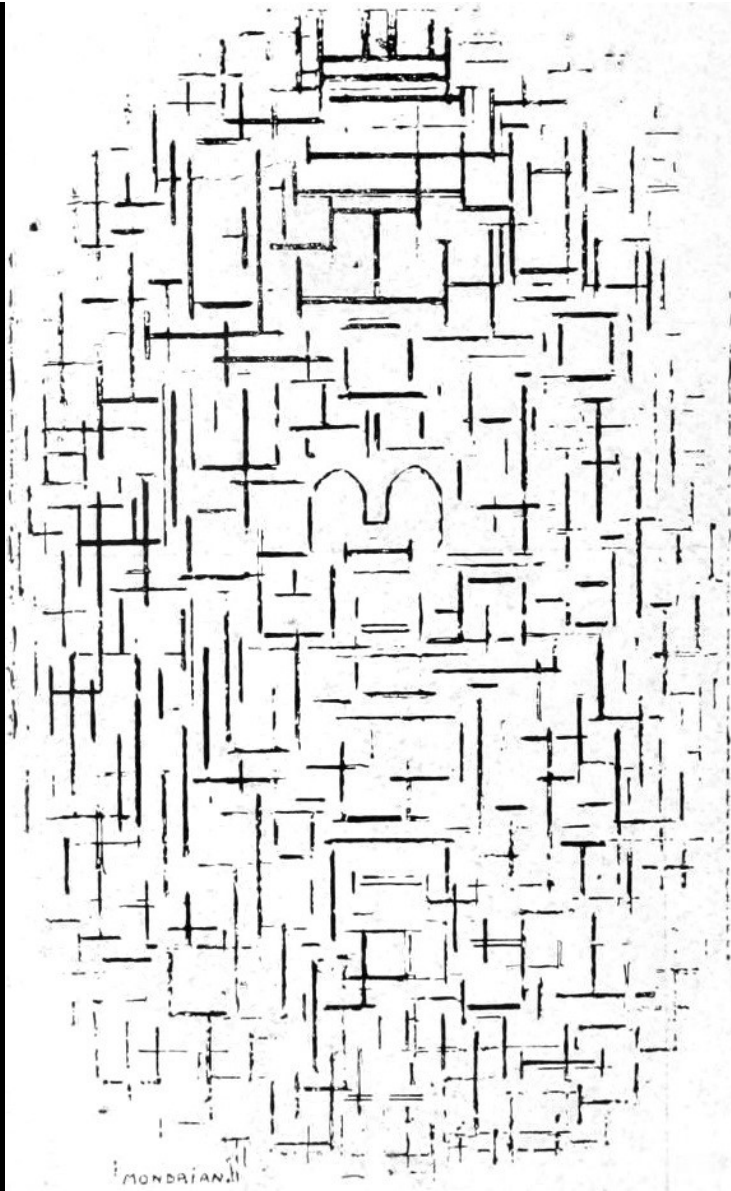




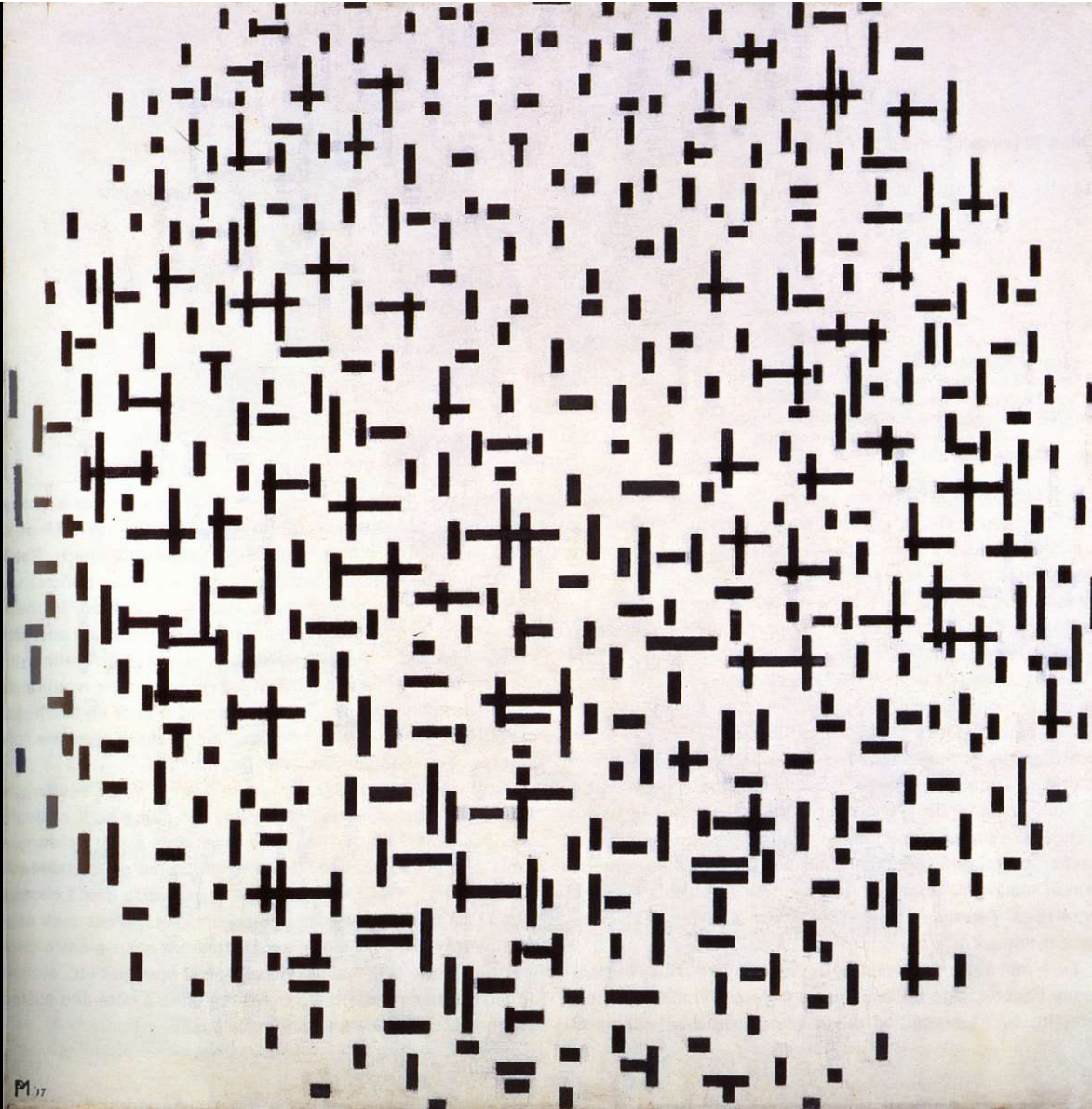




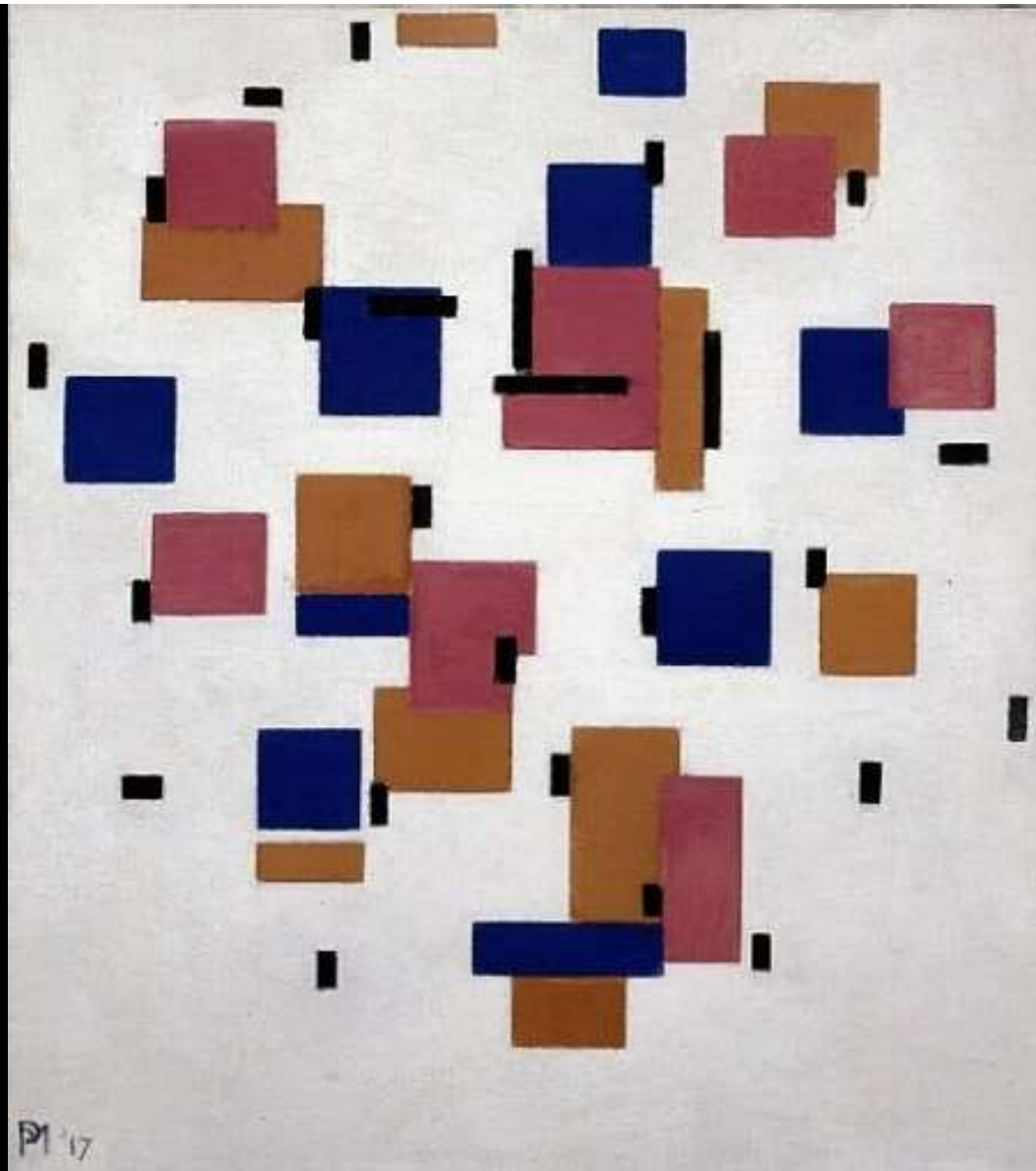






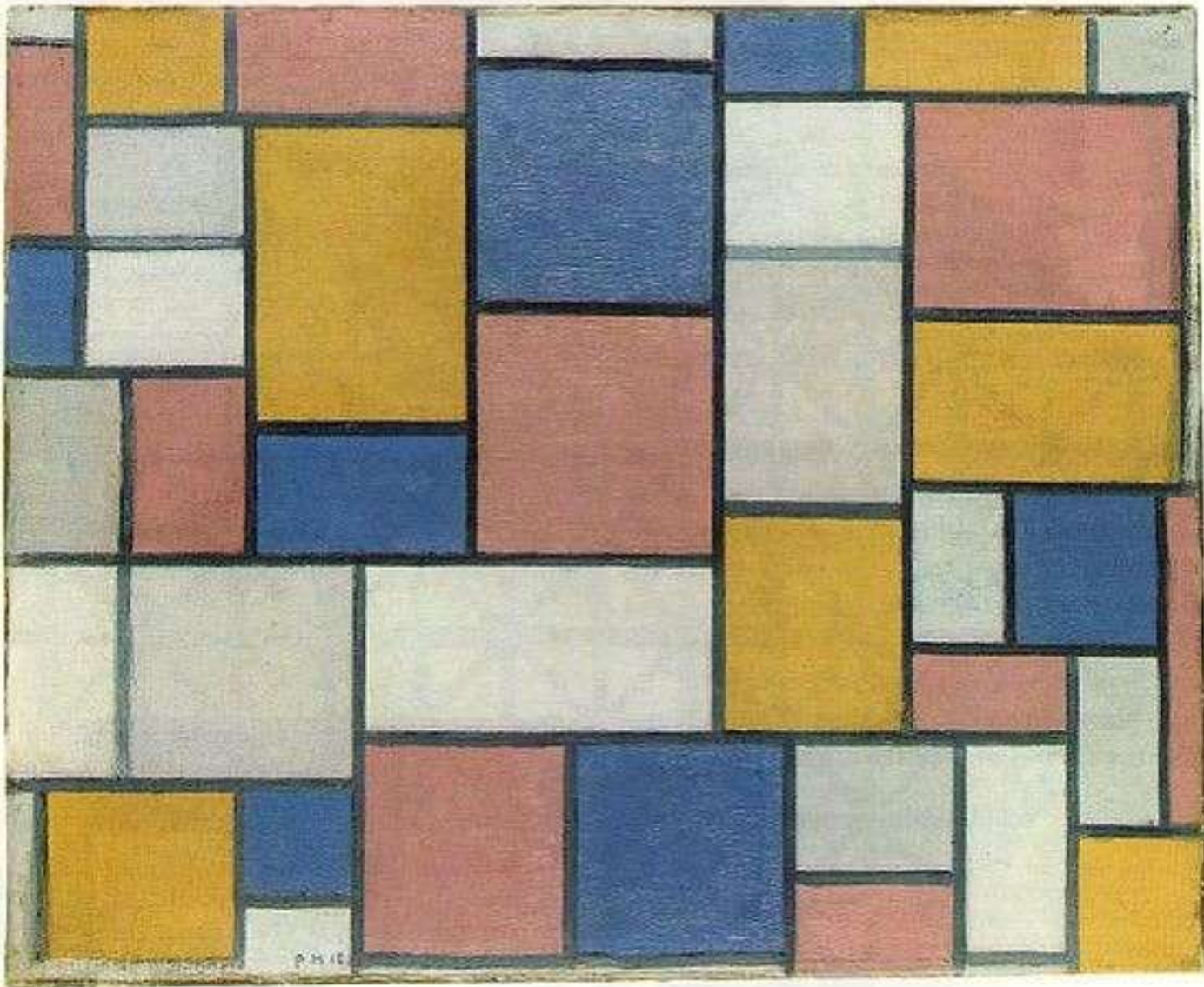


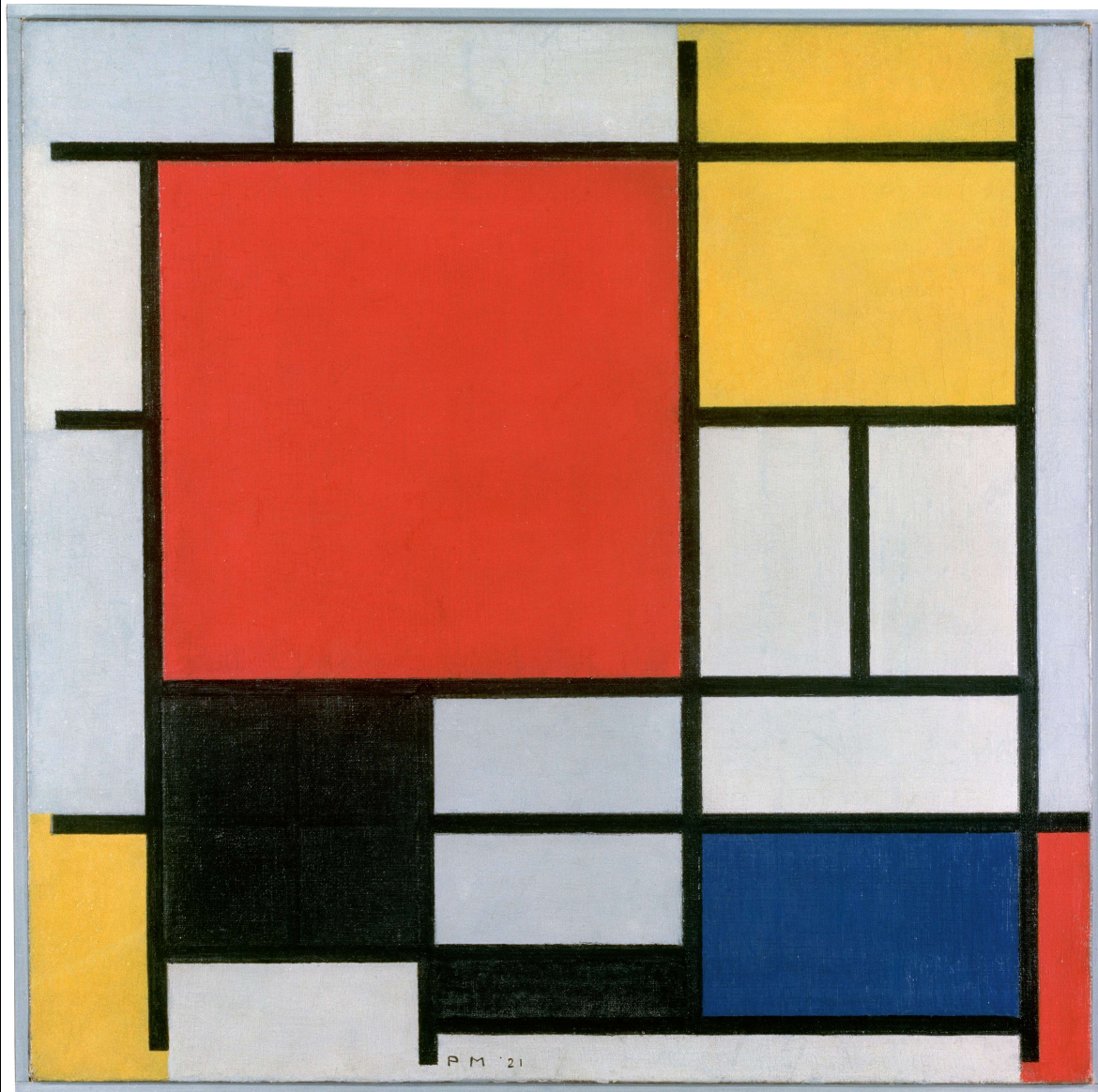
M. 17

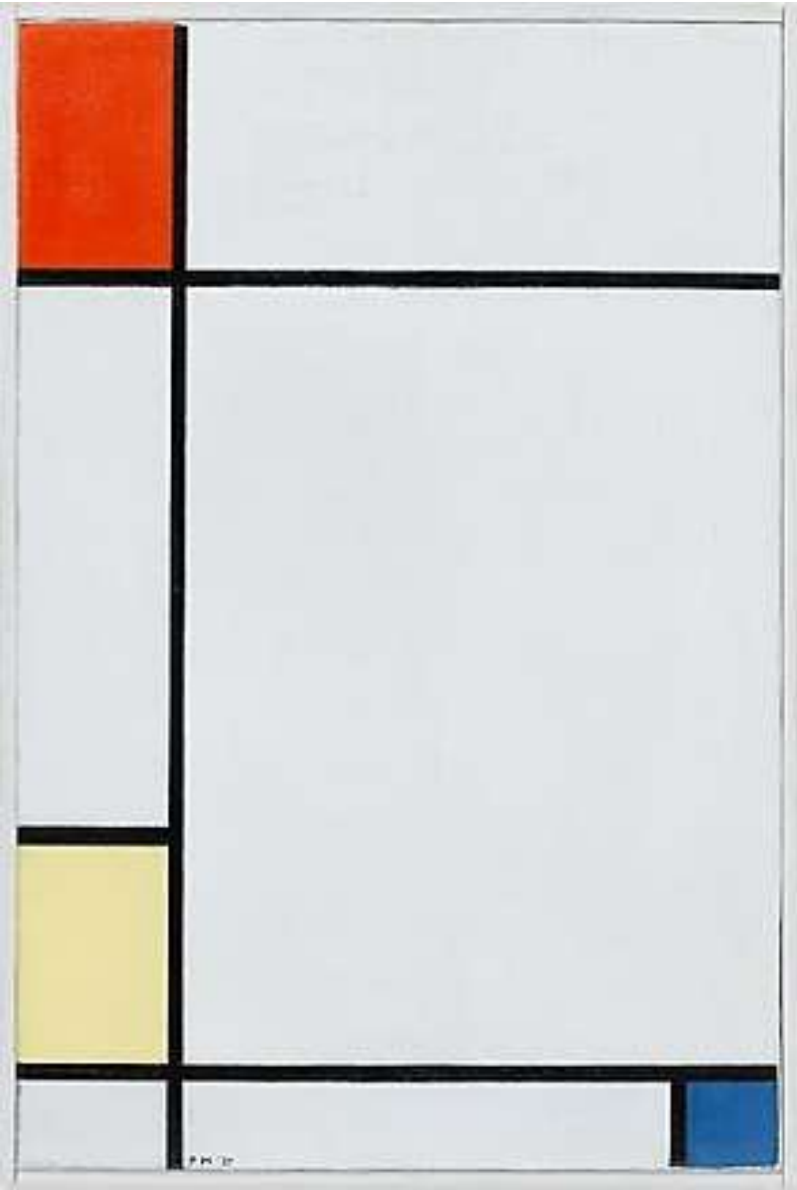


P1 '17

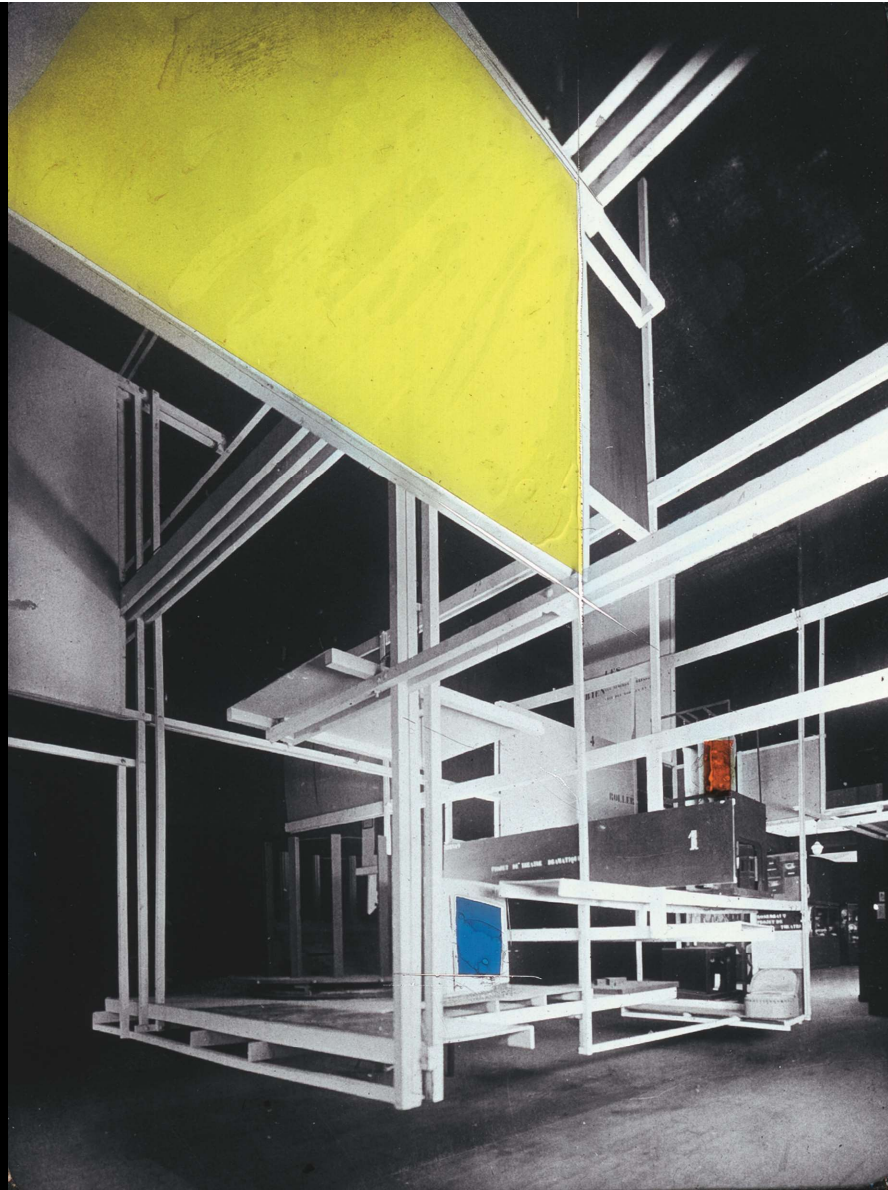










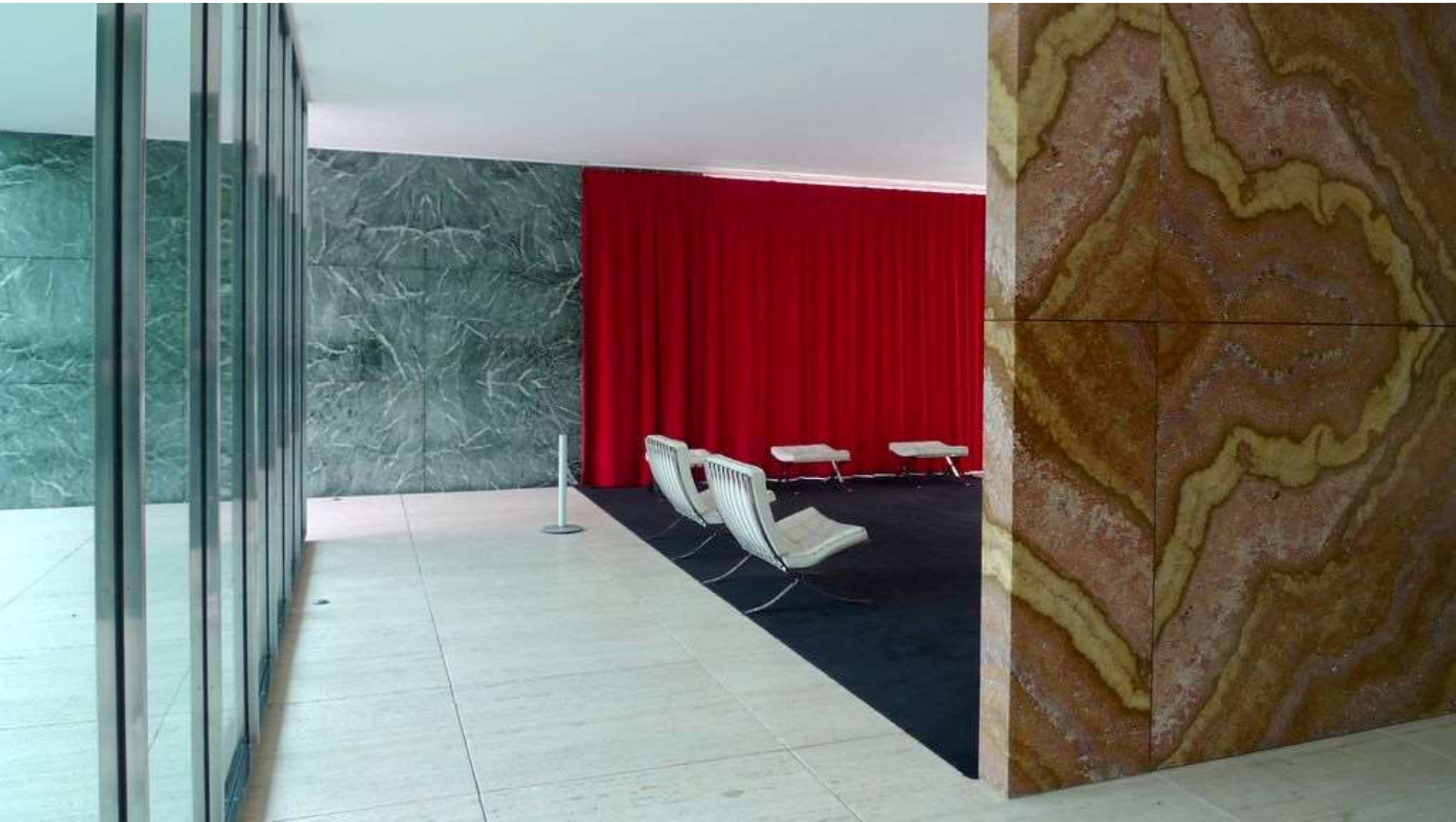










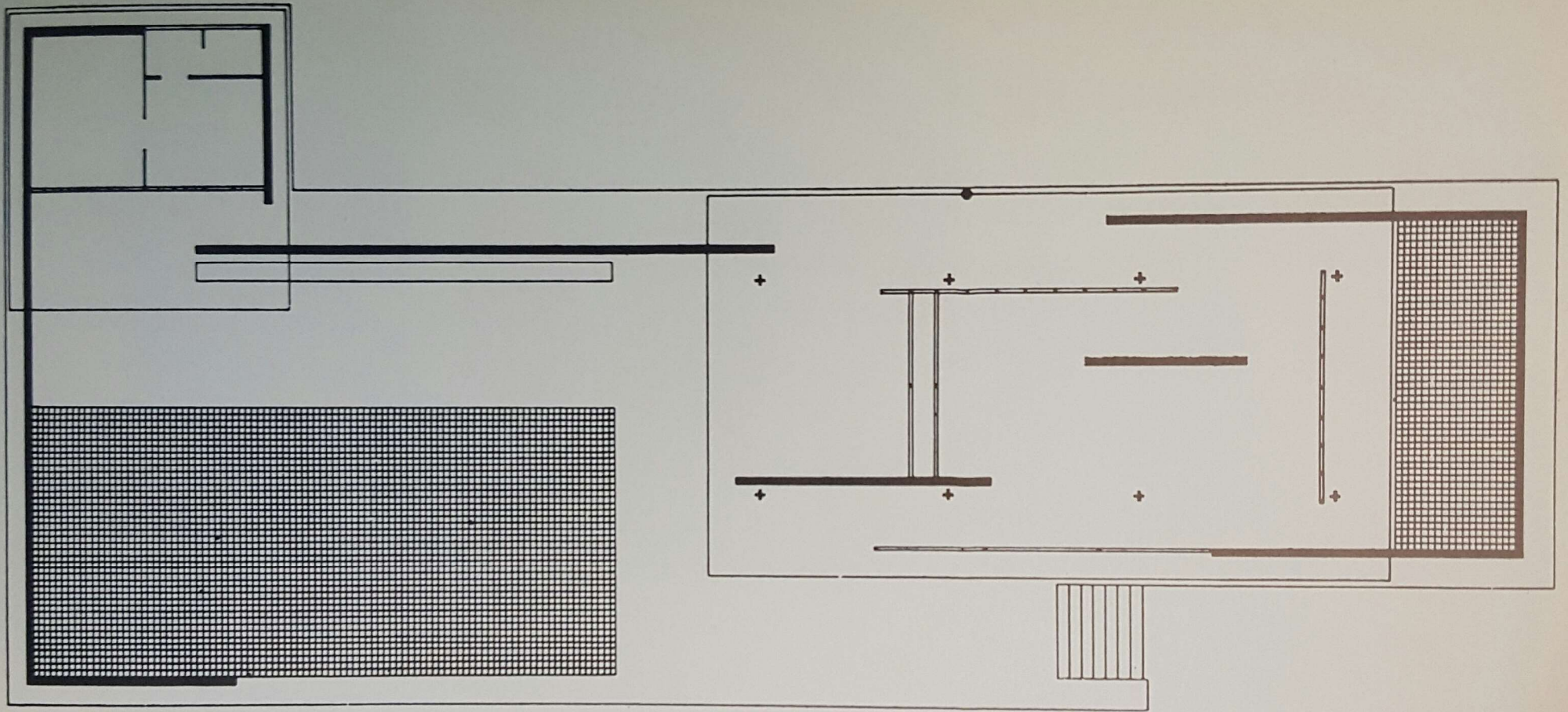




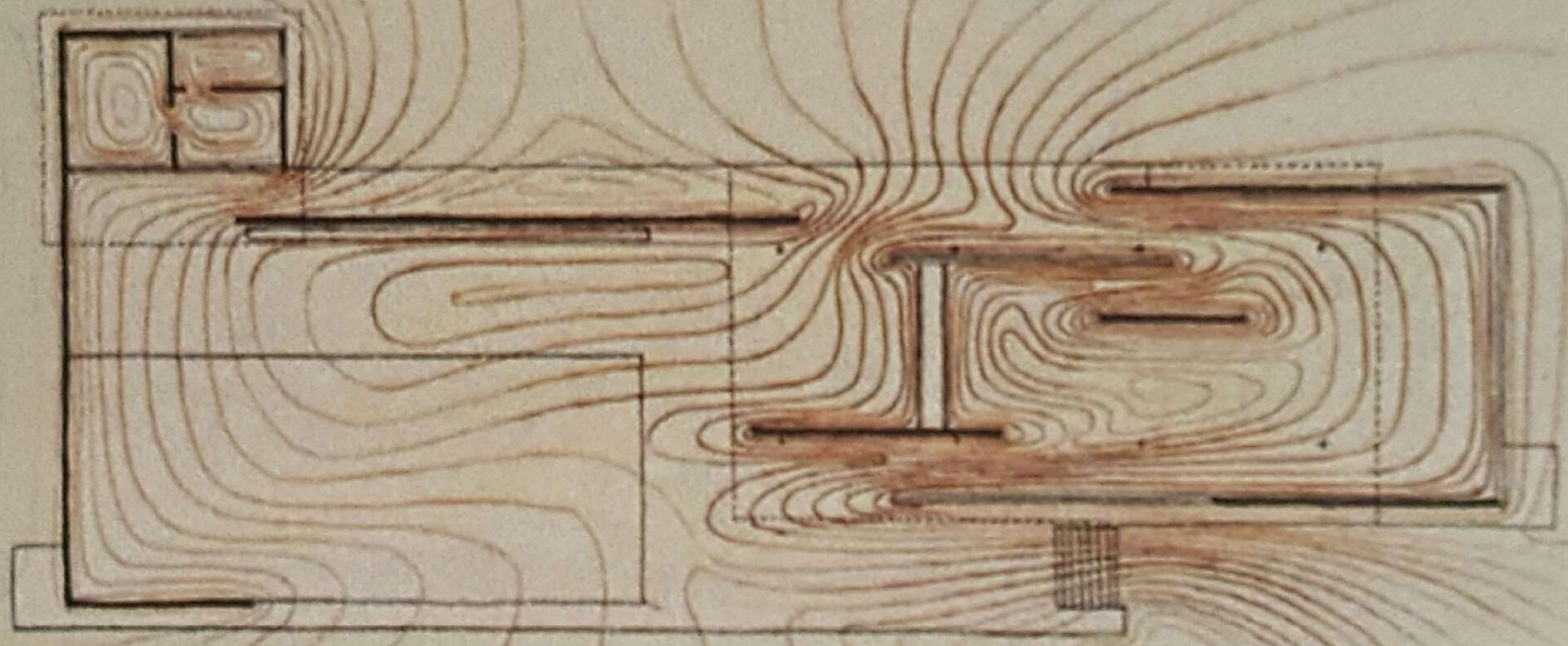








*Plan of Barcelona Pavilion, 1929. Shaded areas are pools lined with black glass. (Courtesy, Mies van der Rohe)*

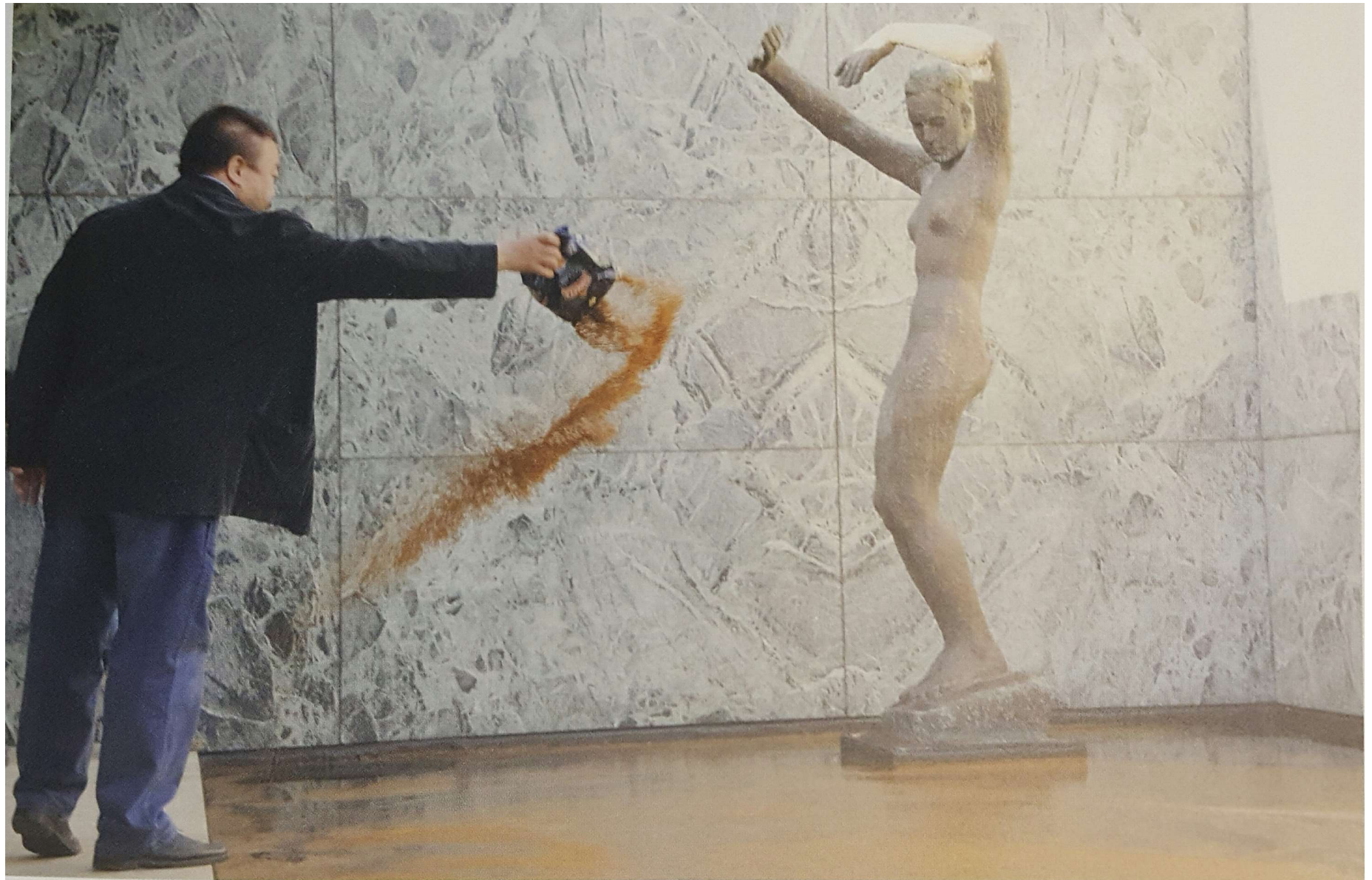




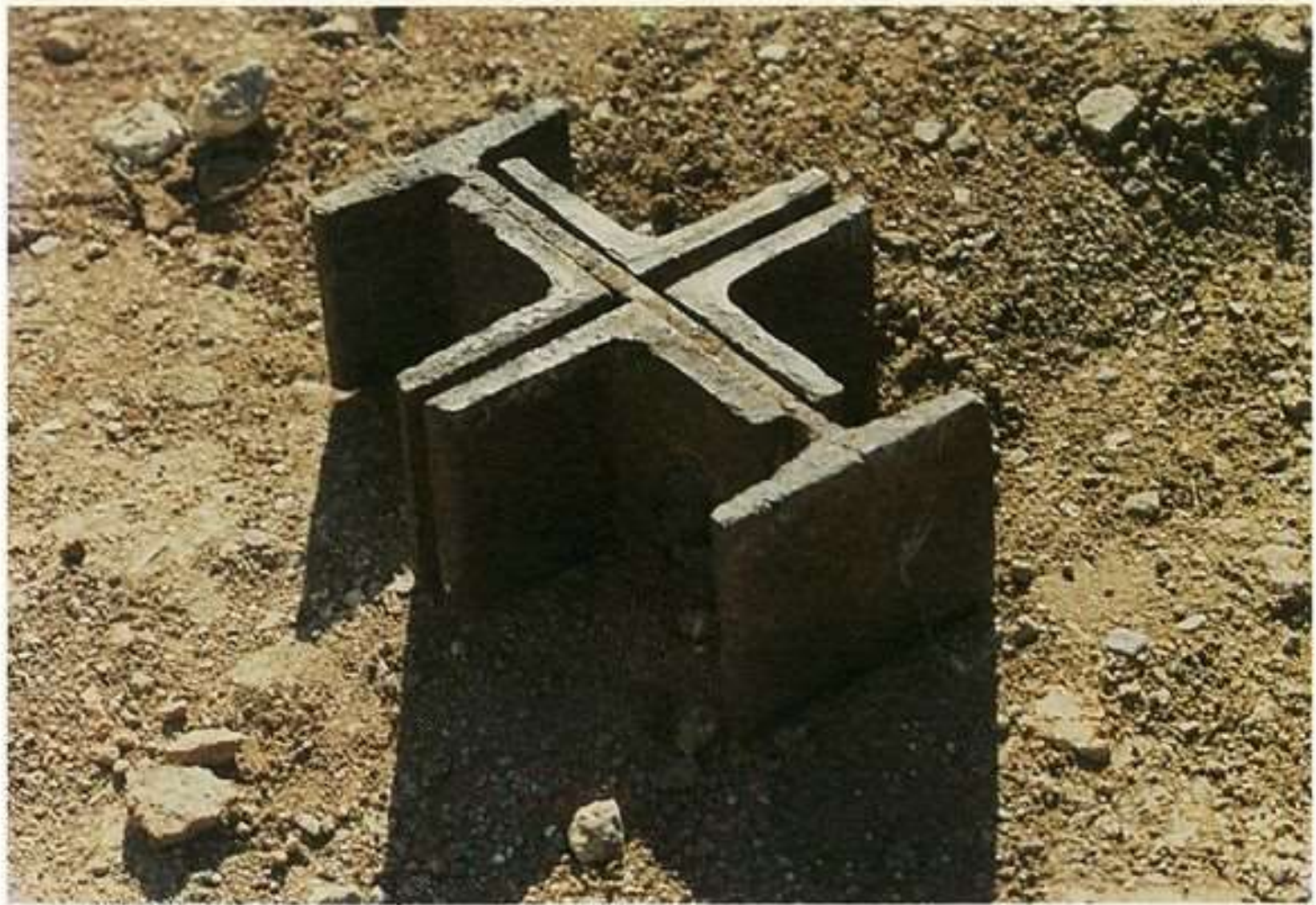




















12/12/2009







14/12/2009





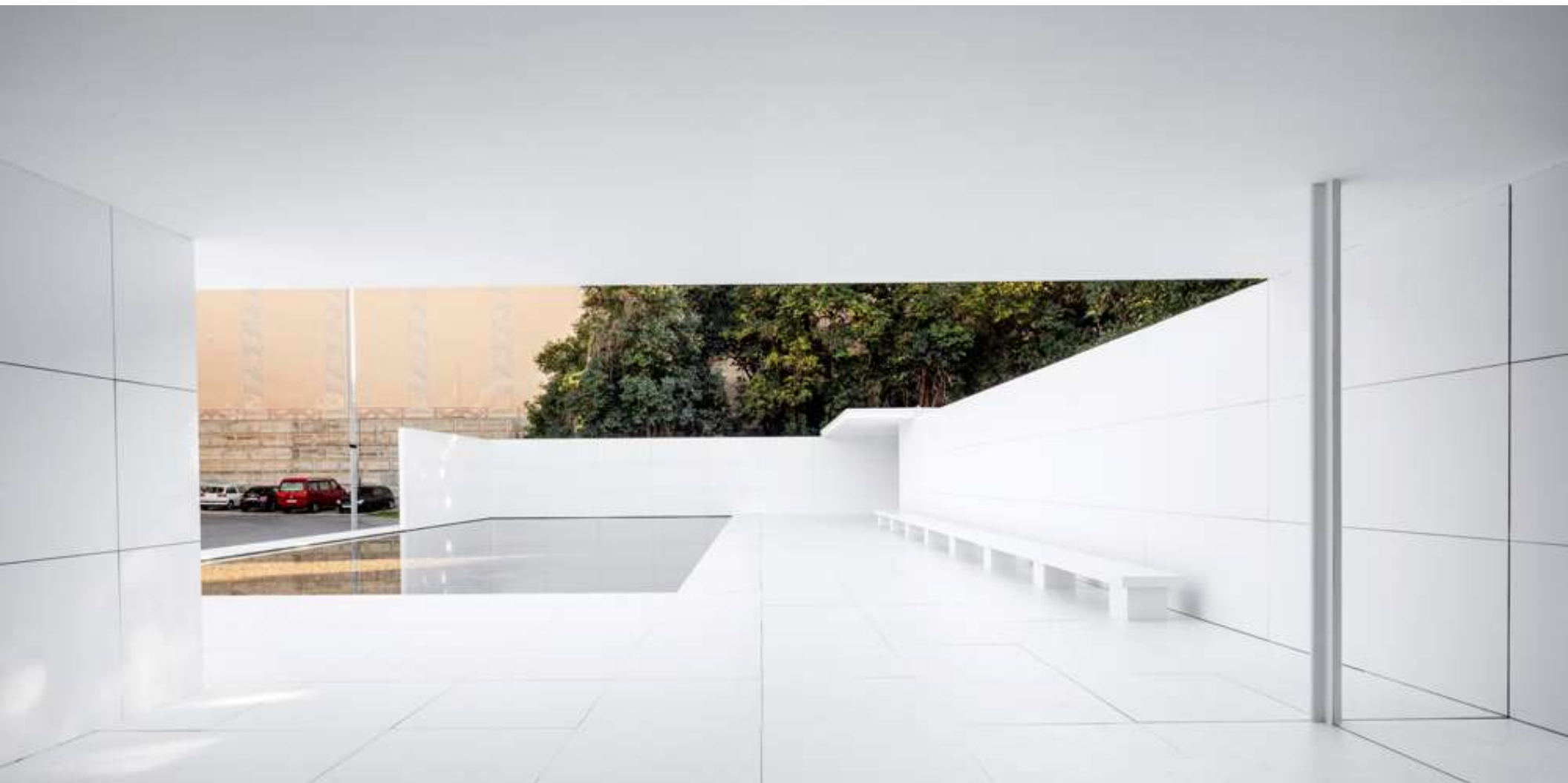


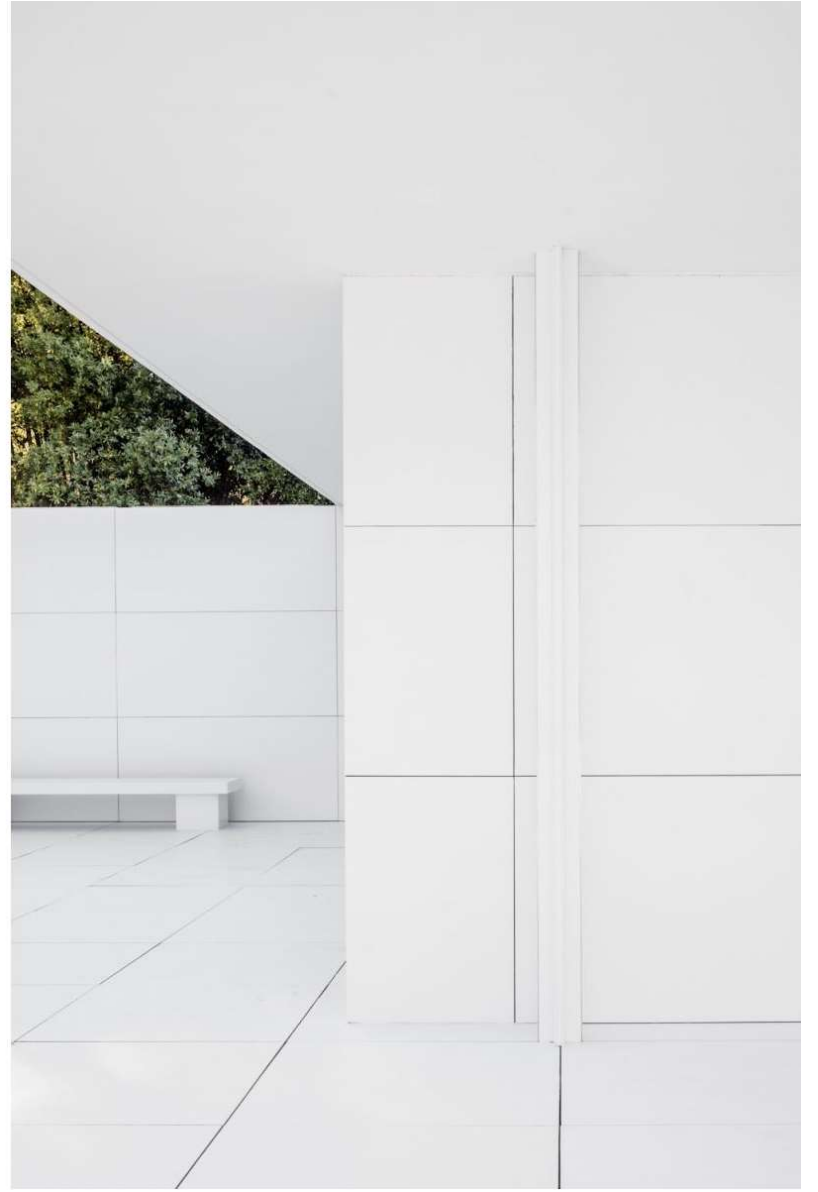




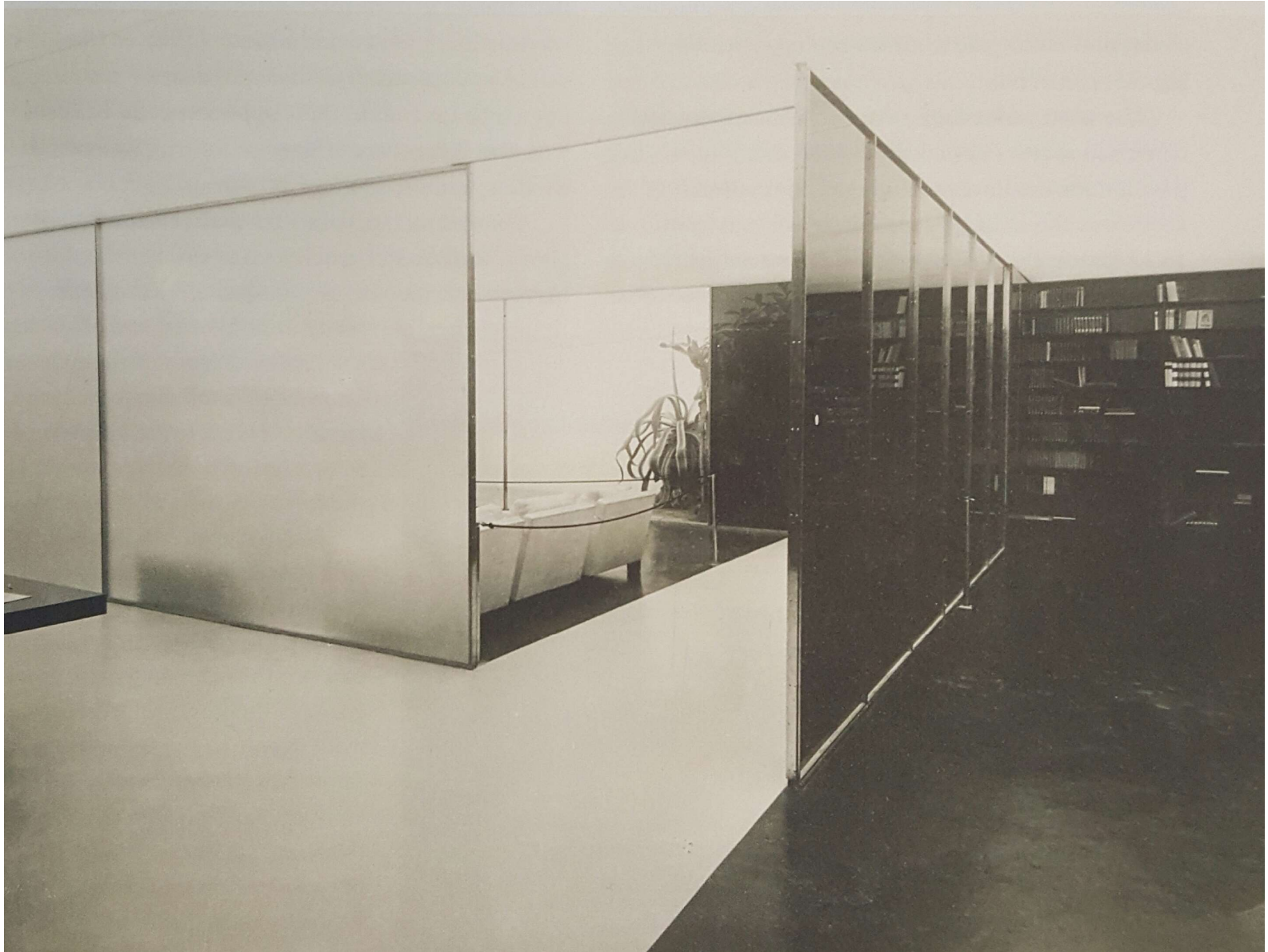












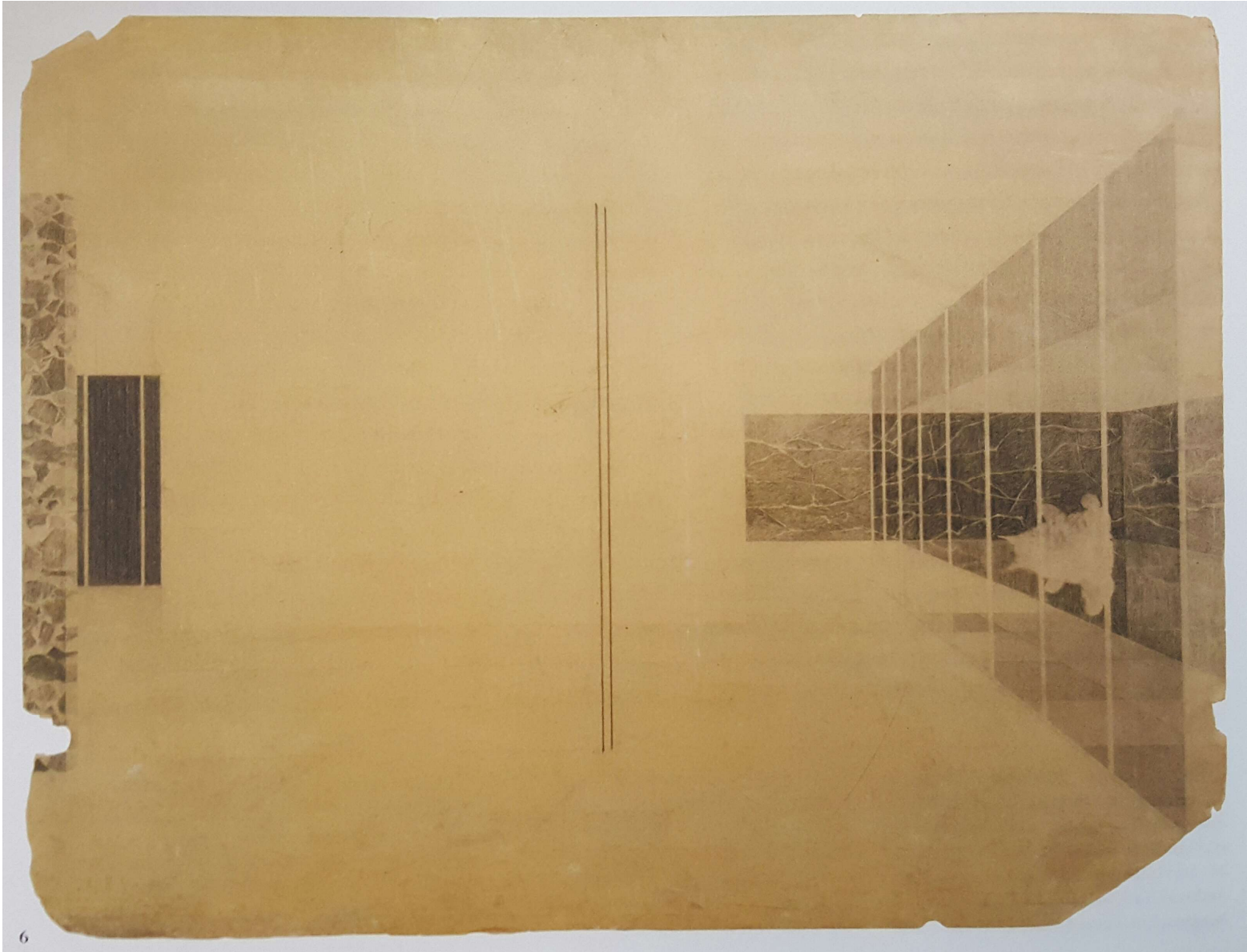






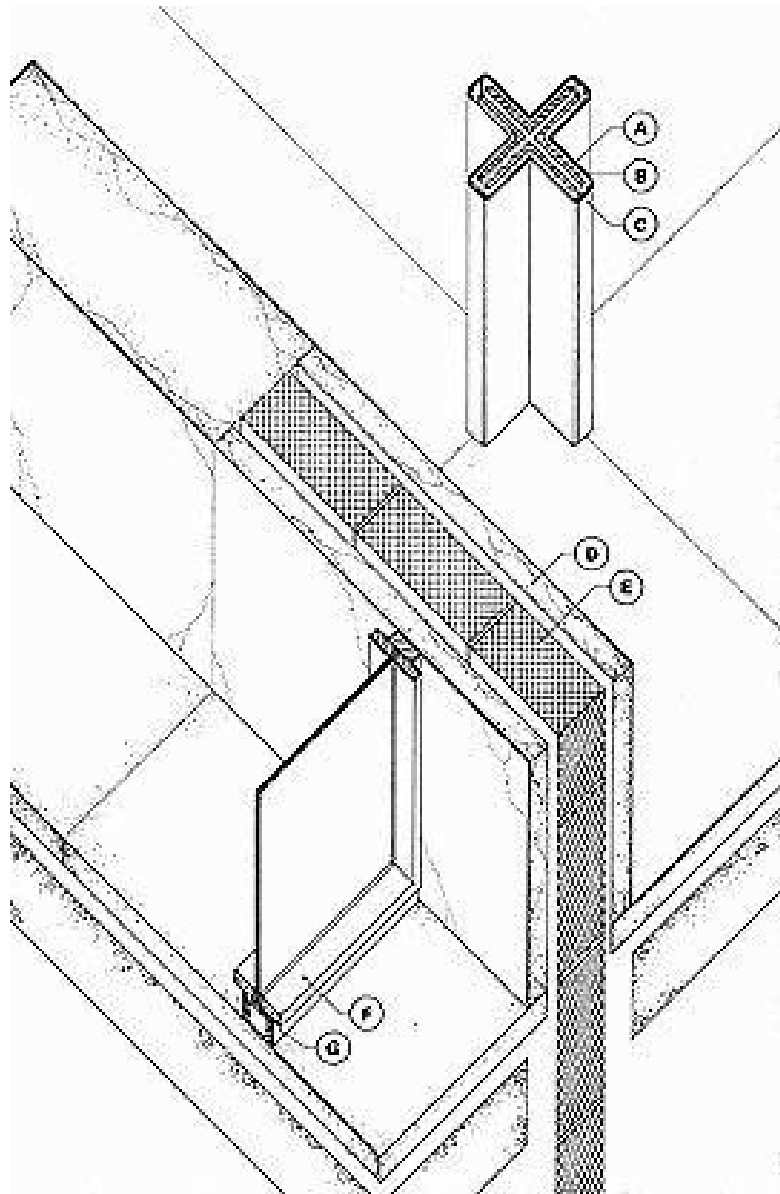












- A** Chrome-plated sheet-metal column cover.
- B** Structural column: four rolled steel angles bolted together.
- C** Chrome-plated sheet-metal cover, attached with machine screws (a rare example of exposed fasteners in Mies's work).
- D** Marble facing. The marble is made as thin as possible to reduce expense. Only the end pieces are solid, so the entire wall appears monolithic.
- E** Brick or concrete masonry-core wall.
- F** Bronze glass stop, attached to base with machine screws.
- G** Window-frame base, fabricated from two structural steel angles which are then clad with bronze sheets.















