

Architecture in the PostModern Era

Lecture 4: Rem Koolhaas



NATIONAL PAVILIONS Absorbing Modernity 1914-2014
1914 National architectures still recognizable...



GERMANY



CHINA



SWITZERLAND



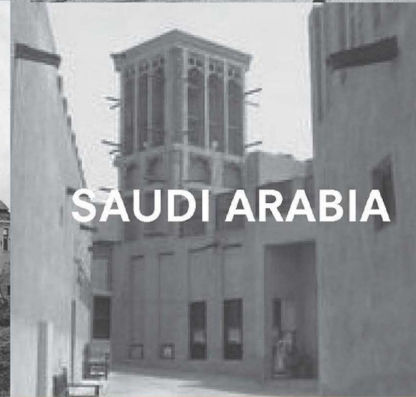
ITALY



FRANCE



NETHERLANDS



SAUDI ARABIA



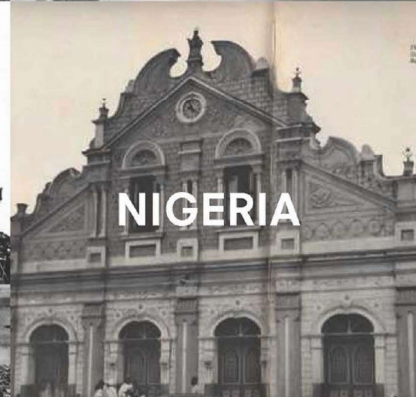
RUSSIA



INDONESIA



JAPAN



NIGERIA



UNITED KINGDOM

NATIONAL PAVILIONS Absorbing Modernity 1914-2014
2014 What remains of national styles today?
How did we get here?

GERMANY

CHINA

SWITZERLAND

ITALY

FRANCE

NETHERLANDS

SAUDI ARABIA

RUSSIA

INDONESIA

JAPAN

NIGERIA

UNITED KINGDOM

delirious new york



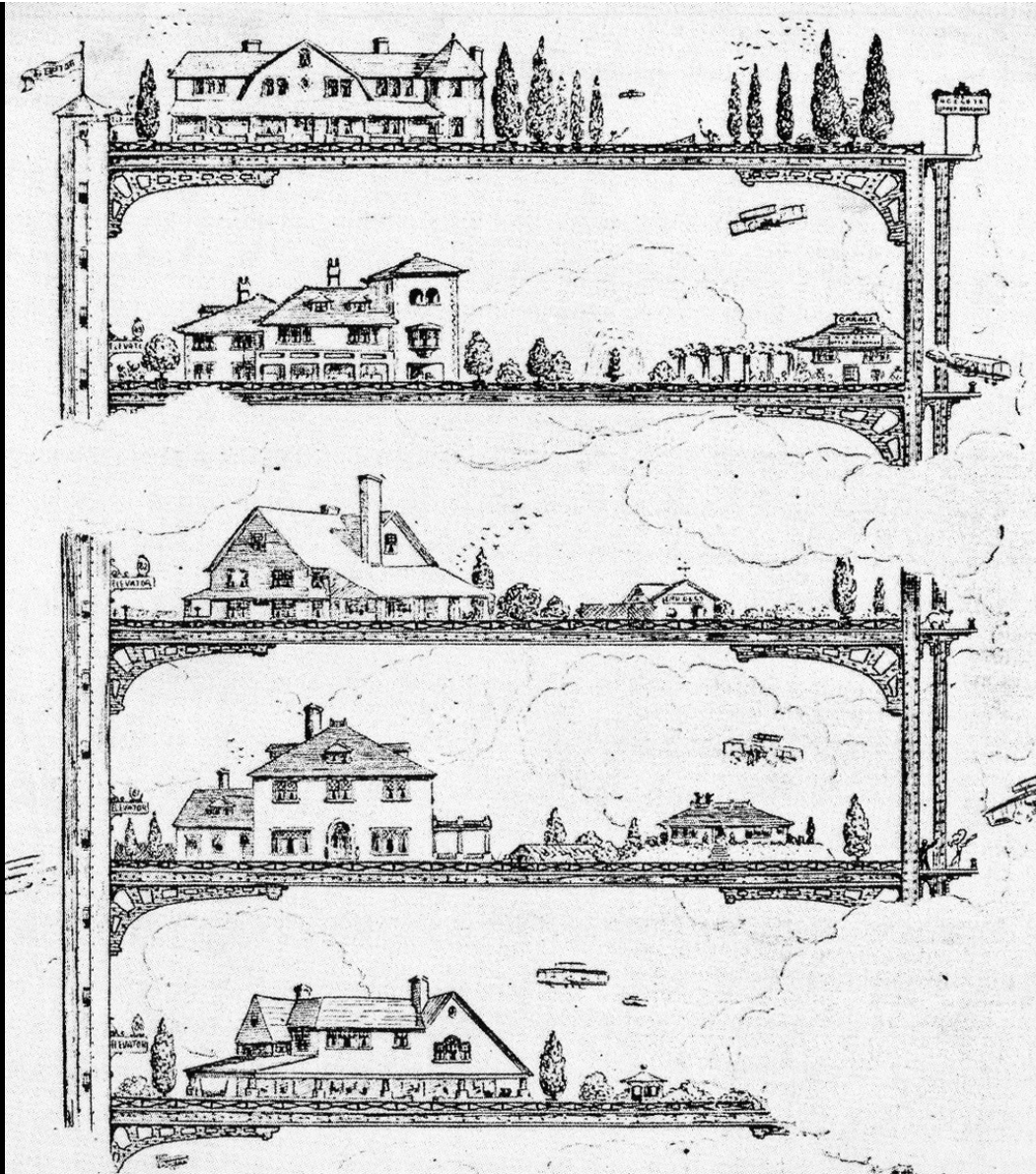


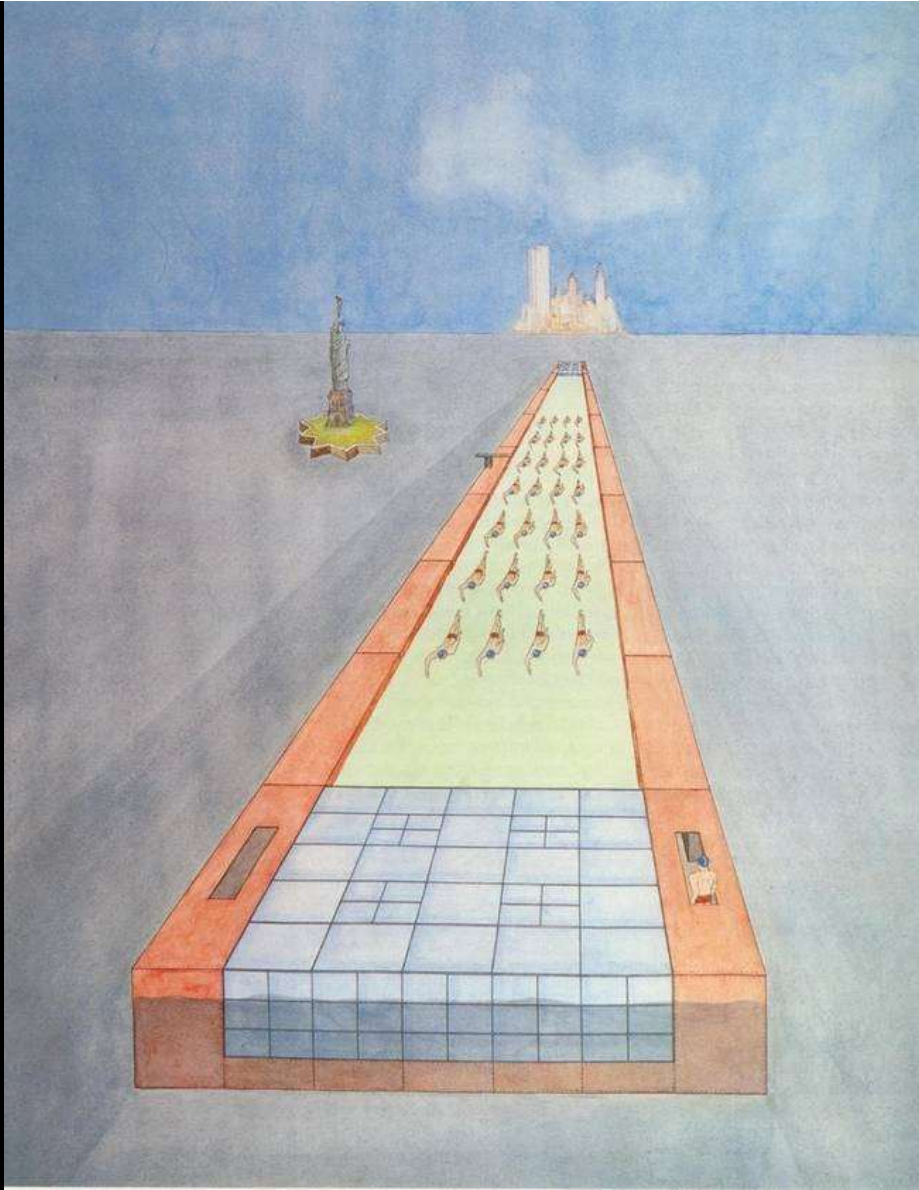
THIS MAP OF THE
City of New York
and
ISLAND of MANHATTAN
as laid out by the
Commissioners appointed by the Legislature
April 3, 1807, is Respectfully Dedicated to the
Mayor, Aldermen and Community thereof
By their most Obedient Servants
Wm. B. Beahm
City Engineer

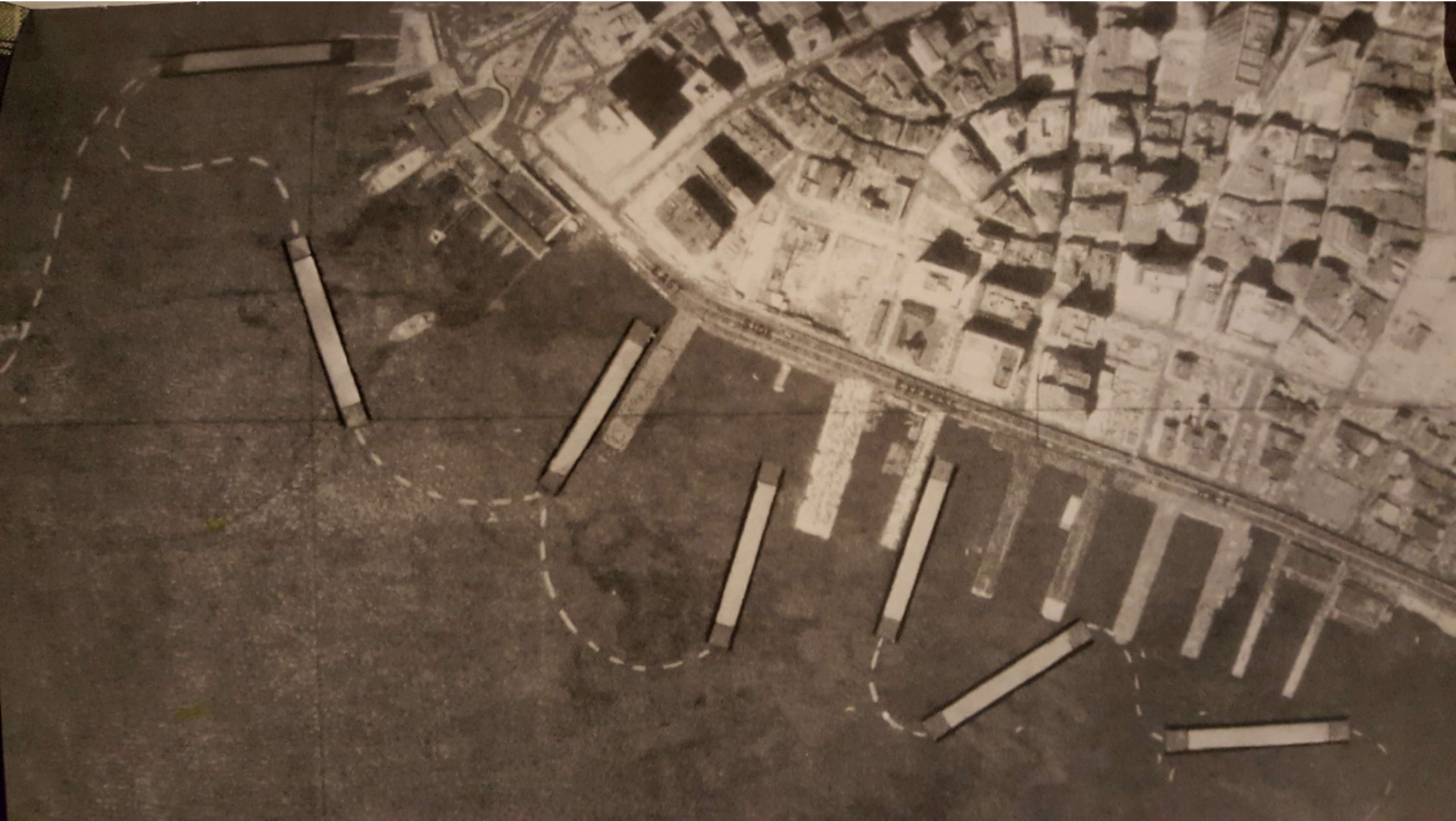
- References**
- | | | | | | | | | | | | | | | | | | | | | | | | | | | | | | | | | | | | | | | | | | | | | | | | | | | | | | | | | | | | | | | | | | | | | | | | | | | | | | | | | | | | | | | | | | | | | | | | | | | | |
|---|---|---|---|---|---|---|---|---|----|----|----|----|----|----|----|----|----|----|----|----|----|----|----|----|----|----|----|----|----|----|----|----|----|----|----|----|----|----|----|----|----|----|----|----|----|----|----|----|----|----|----|----|----|----|----|----|----|----|----|----|----|----|----|----|----|----|----|----|----|----|----|----|----|----|----|----|----|----|----|----|----|----|----|----|----|----|----|----|----|----|----|----|----|----|----|----|----|----|-----|
| 1 | 2 | 3 | 4 | 5 | 6 | 7 | 8 | 9 | 10 | 11 | 12 | 13 | 14 | 15 | 16 | 17 | 18 | 19 | 20 | 21 | 22 | 23 | 24 | 25 | 26 | 27 | 28 | 29 | 30 | 31 | 32 | 33 | 34 | 35 | 36 | 37 | 38 | 39 | 40 | 41 | 42 | 43 | 44 | 45 | 46 | 47 | 48 | 49 | 50 | 51 | 52 | 53 | 54 | 55 | 56 | 57 | 58 | 59 | 60 | 61 | 62 | 63 | 64 | 65 | 66 | 67 | 68 | 69 | 70 | 71 | 72 | 73 | 74 | 75 | 76 | 77 | 78 | 79 | 80 | 81 | 82 | 83 | 84 | 85 | 86 | 87 | 88 | 89 | 90 | 91 | 92 | 93 | 94 | 95 | 96 | 97 | 98 | 99 | 100 |
|---|---|---|---|---|---|---|---|---|----|----|----|----|----|----|----|----|----|----|----|----|----|----|----|----|----|----|----|----|----|----|----|----|----|----|----|----|----|----|----|----|----|----|----|----|----|----|----|----|----|----|----|----|----|----|----|----|----|----|----|----|----|----|----|----|----|----|----|----|----|----|----|----|----|----|----|----|----|----|----|----|----|----|----|----|----|----|----|----|----|----|----|----|----|----|----|----|----|----|-----|

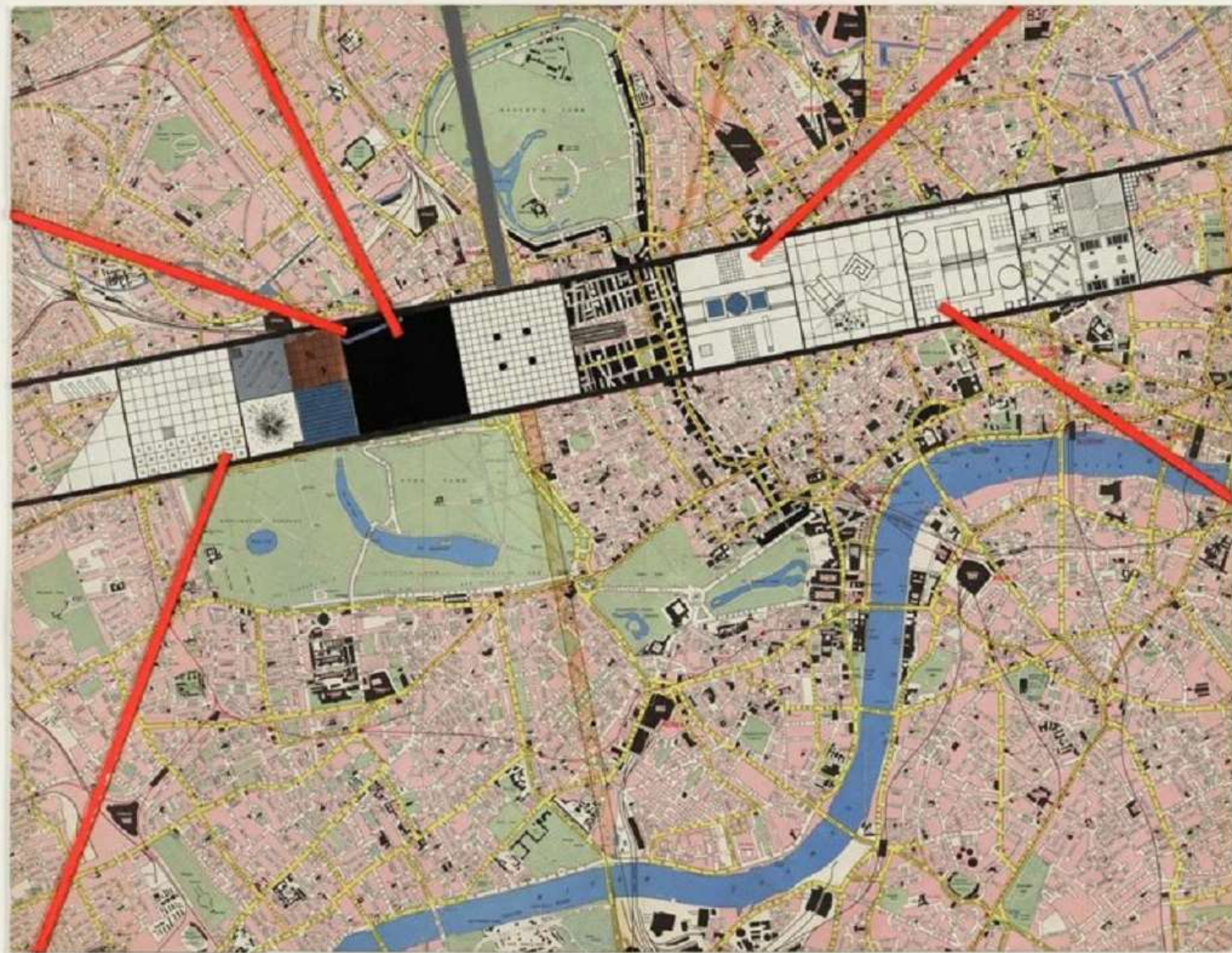
Scale of One Mile.



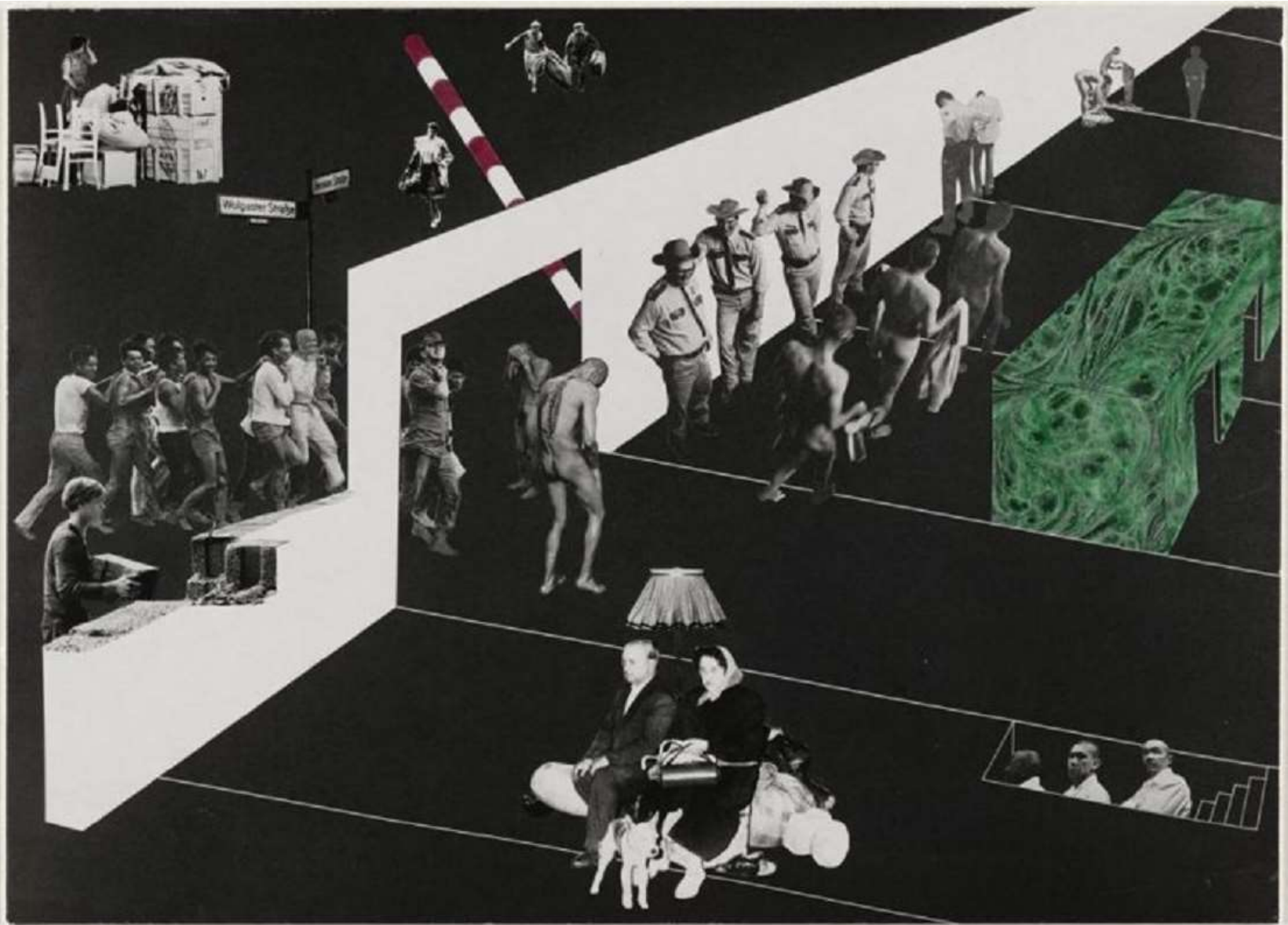


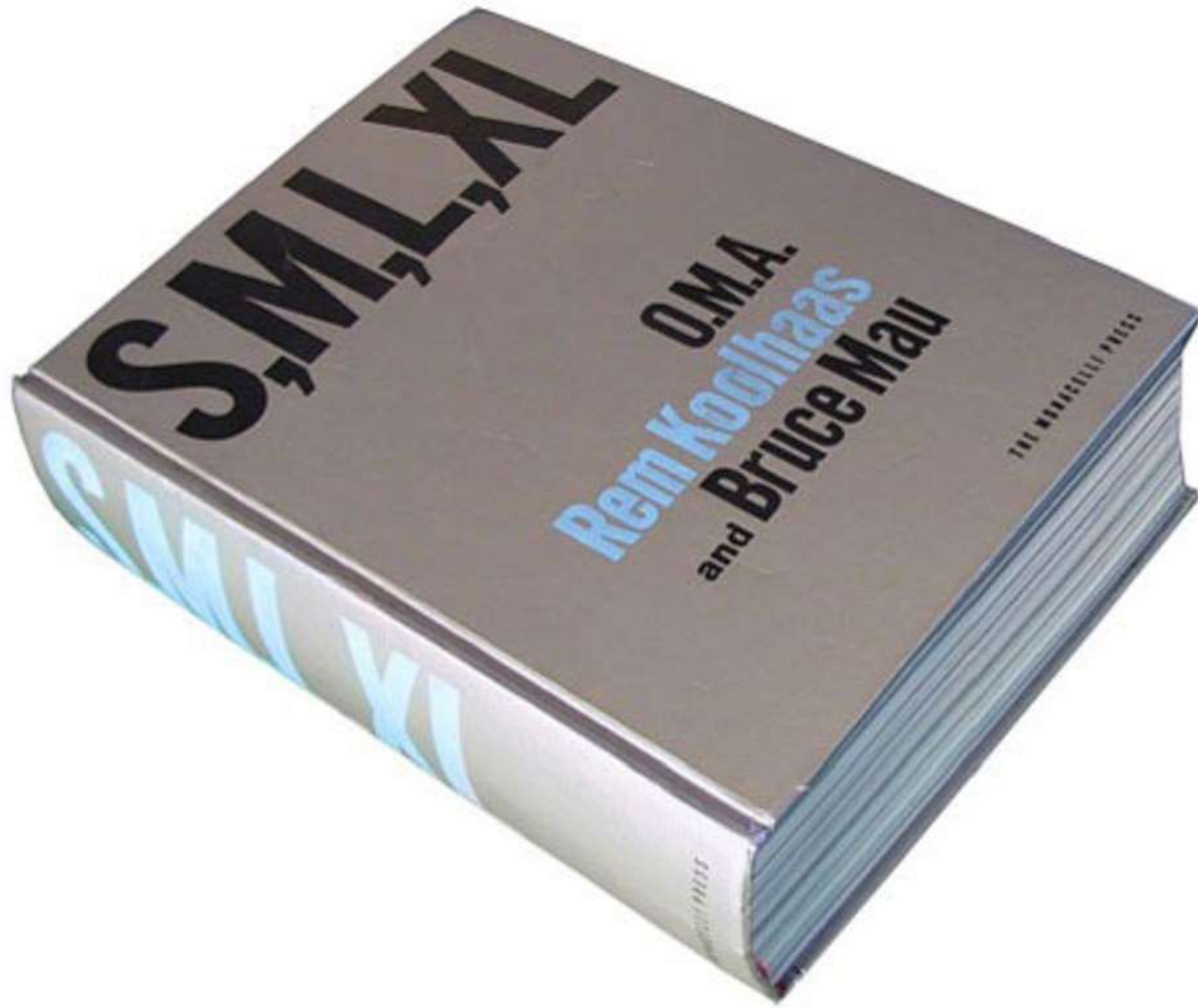
















Bands



Bands and their designations:
connections, circulations,
programs, landscape, empty,
borders



Interbands: archipelago of
residual islands



Circulation in the interbands



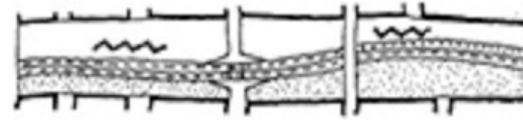
Principal circulations



Recreational facilities



Bands and their event-structures



Band of connections
industrial park
asphalt parking
autobahn
grocery
new-style villa



Band of circulation
secondary route
park / "zigzag sections" alternative
autobahn
woods with recreation, garden,
billboards



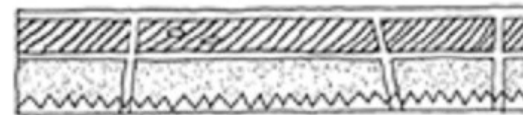
Band of programs
street
existing elements: factory, forest,
farming, park
new elements: university, recreation,
garden
street



Band of landscape



Empty band
front edge
park
building edge

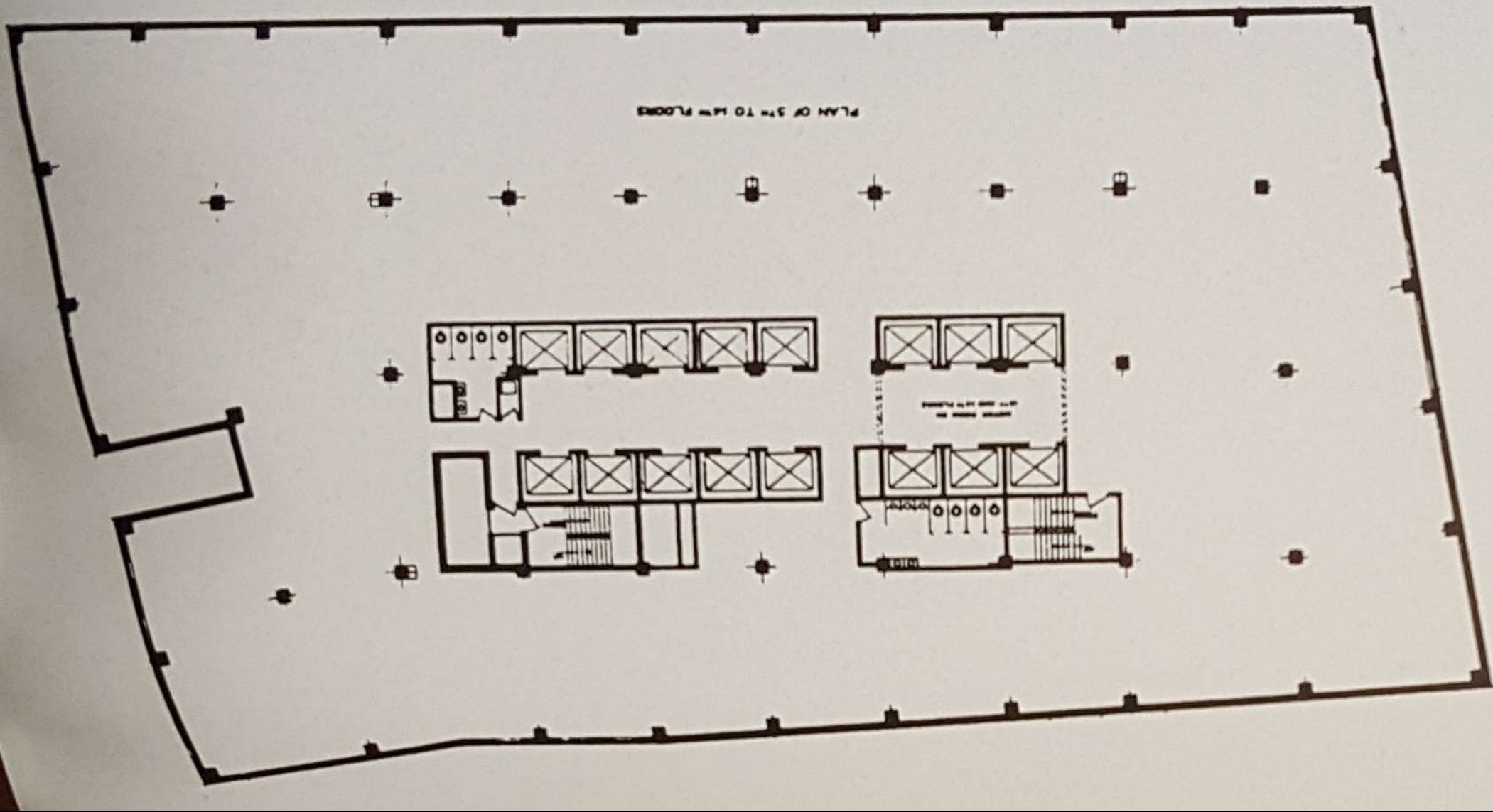


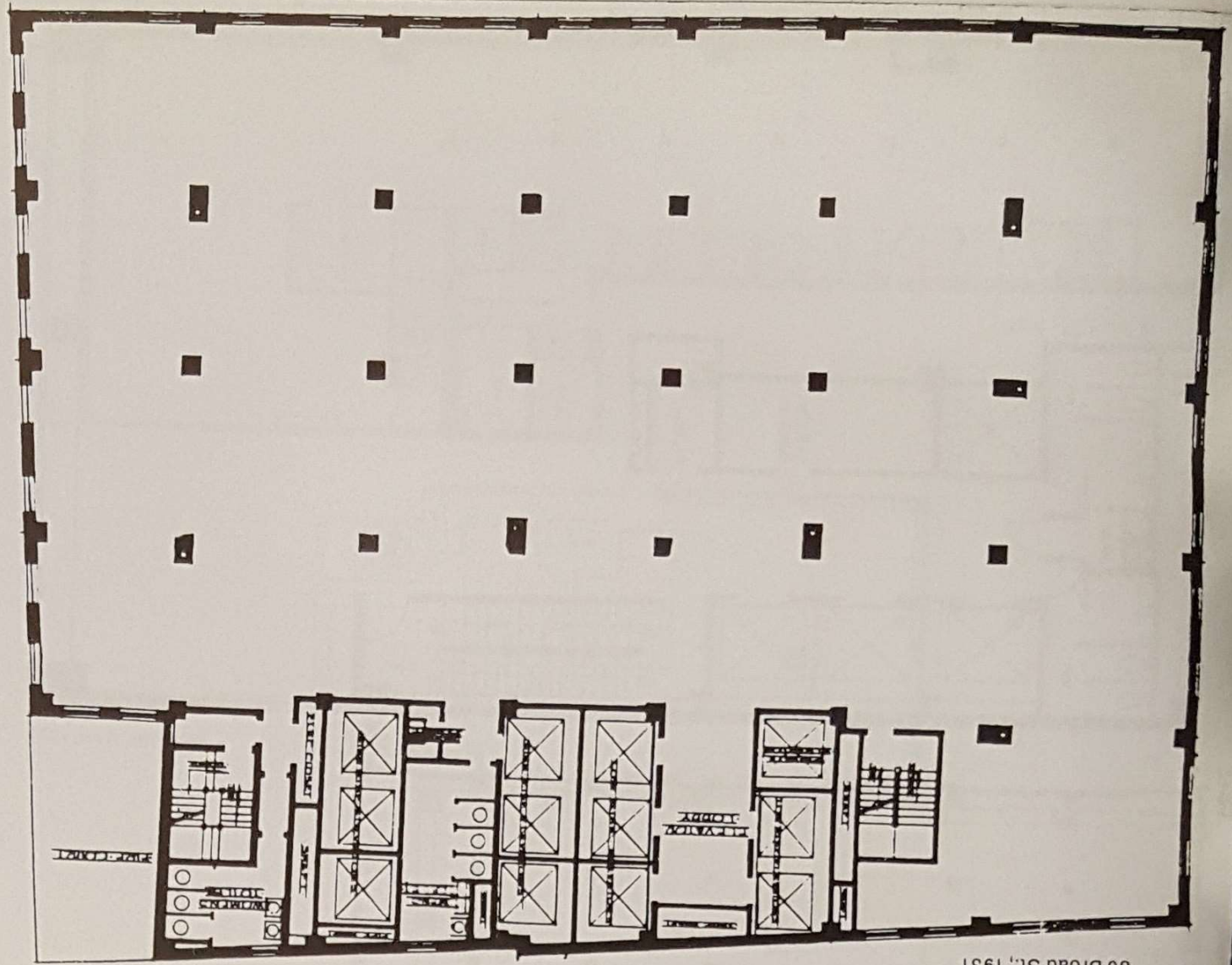
Border band
water
recreation
background
lawn



Border band
countryside
park with recreation
main

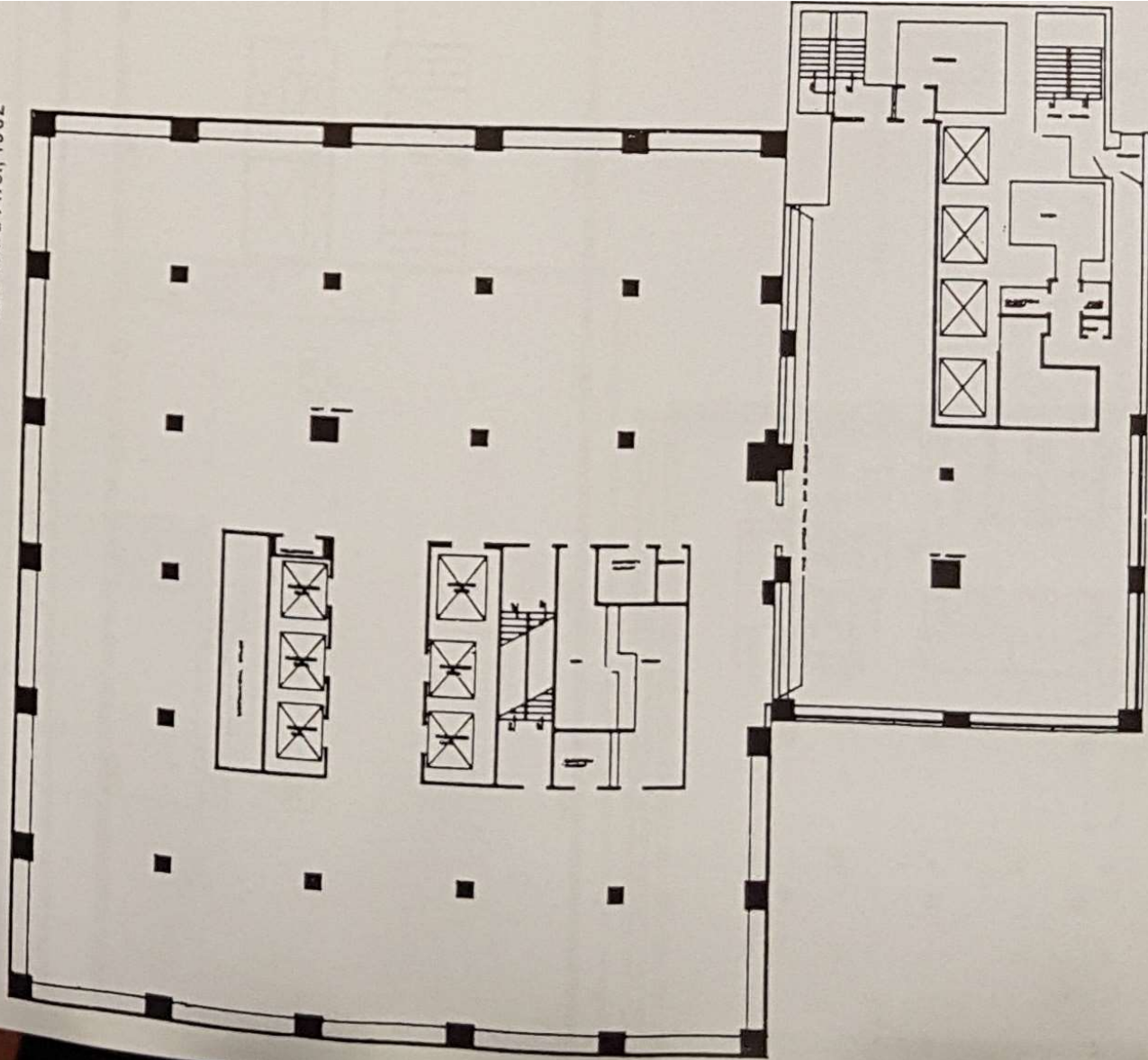
PLAN OF 5TH TO 14TH FLOORS



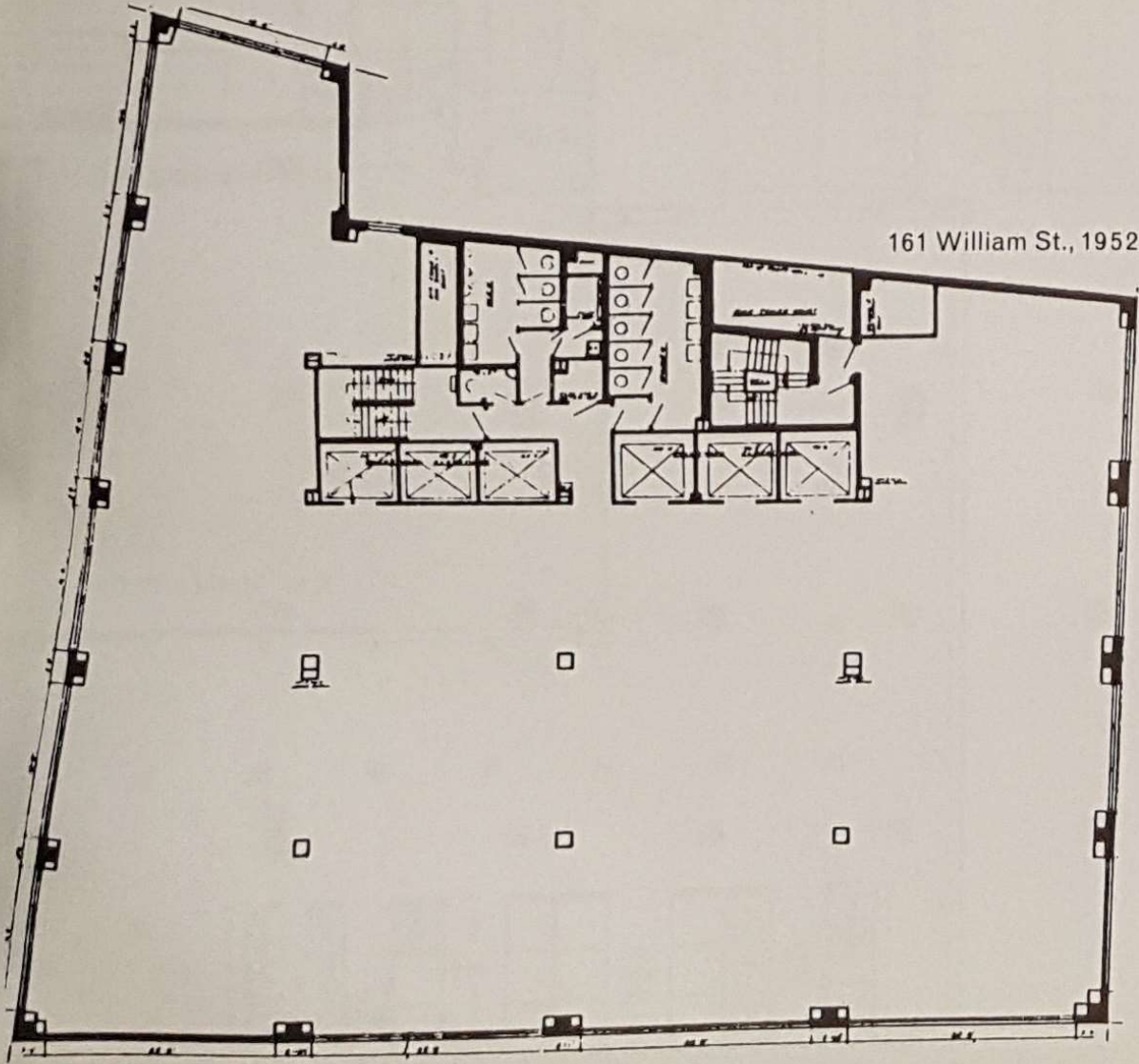


80 Broad St., 1931

685 Third Ave., 1962

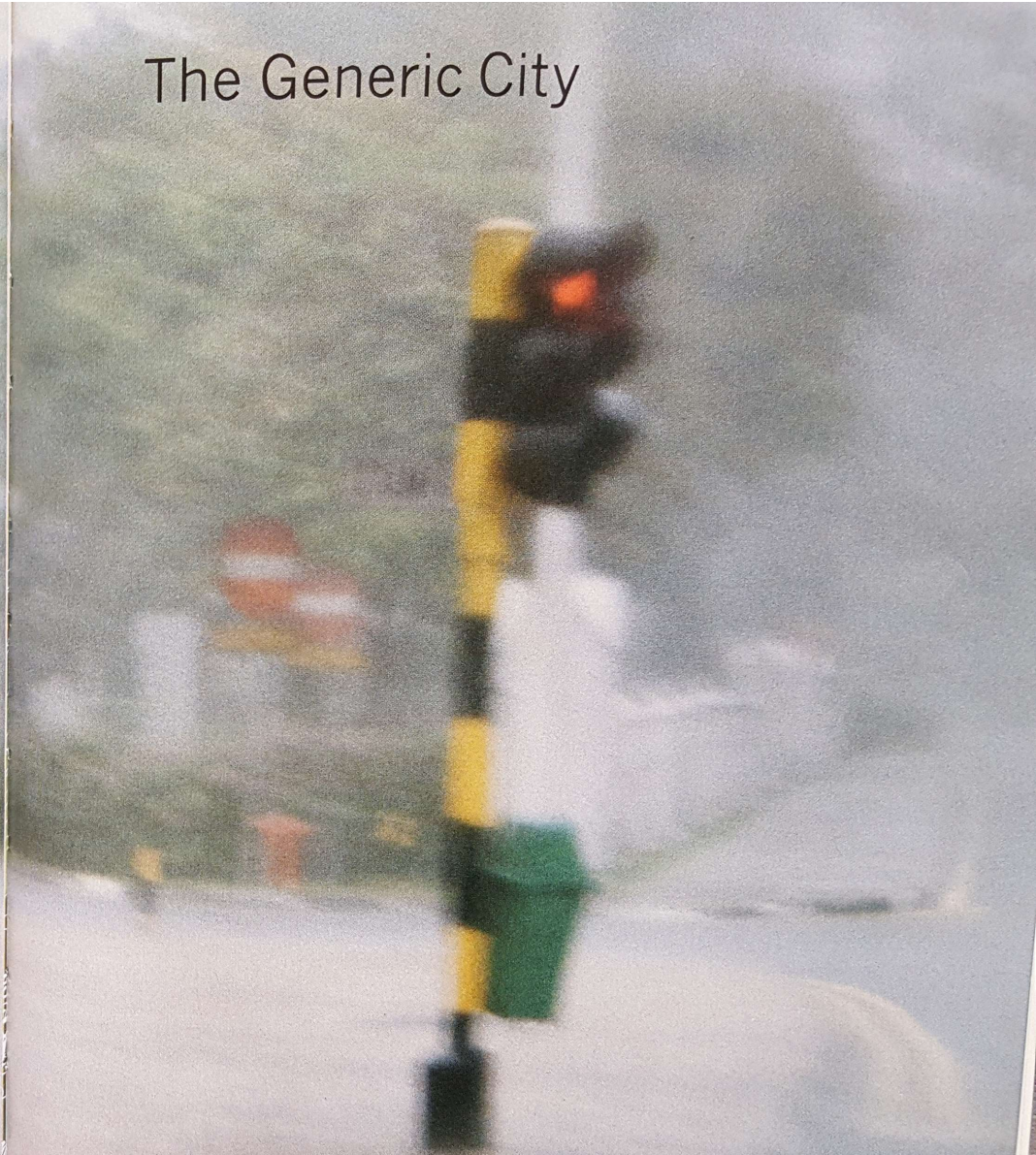


161 William St., 1952

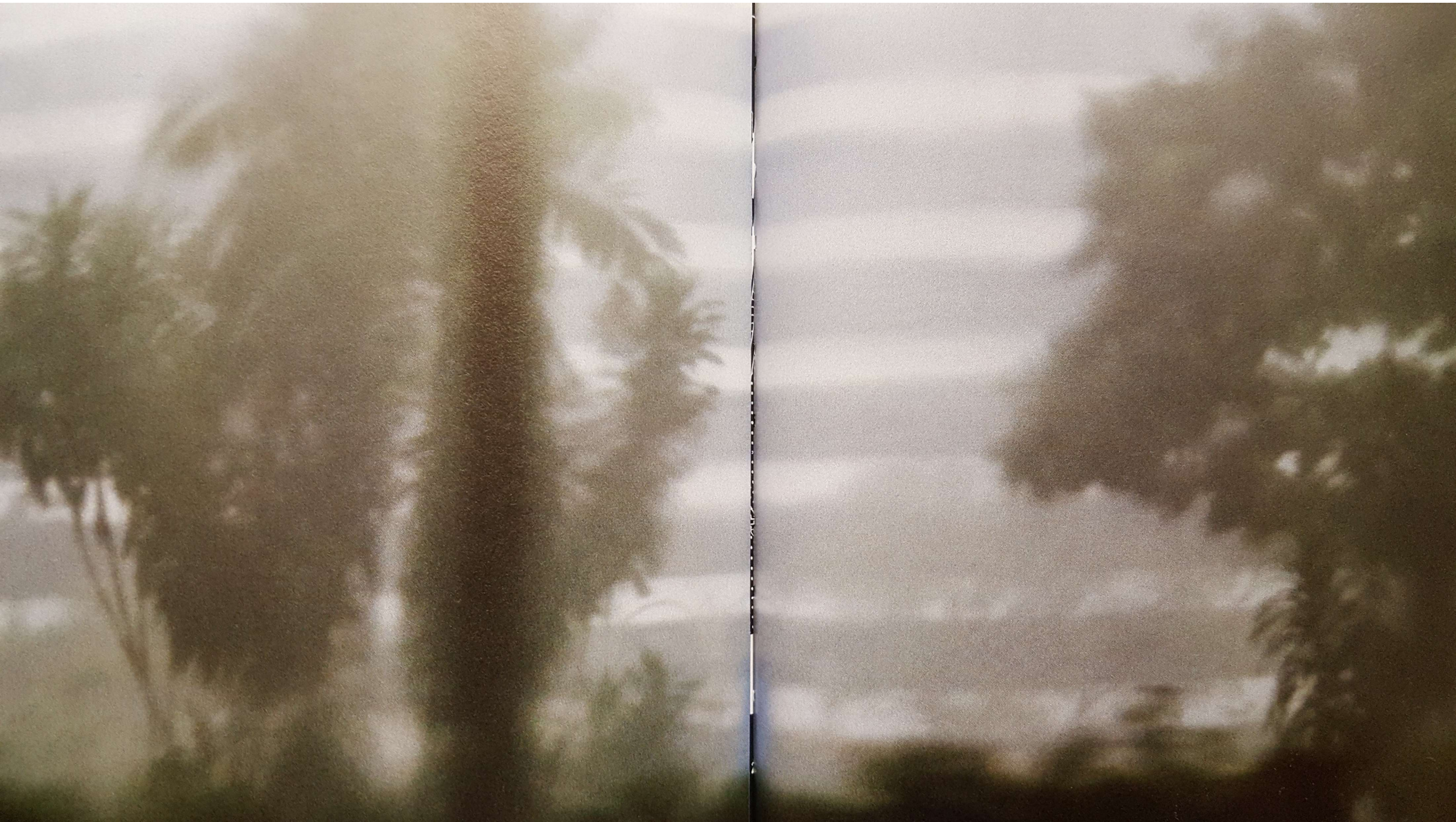




The Generic City













Actual

Virtual



In 1999, Koolhaas founded AMO, a think tank within OMA dedicated to producing non-architectural work including exhibitions.

AMO has become one of the most visible and original knowledge based design practices in the world today

The formation of AMO was the result of Koolhaas and OMA's realization that knowledge and expertise accumulated in the development of large-scale architectural projects, even uncompleted ones, was the valuable resource worth developing



PROJECT ON THE CITY 2

edited by chuihua judy chung, jeffrey inaba, rem koolhaas, sze tsung leong

HARVARD DESIGN SCHOOL GUIDE TO SHOPPING

essays by tae-wook cha, chuihua judy chung, jutiki gunter, daniel herman, hiromi hosoya, jeffrey inaba, rem koolhaas, sze tsung leong, kiwa matsushita, john mcmorrough, juan palop-casado, markus schaefer, tran vinh, srdjan jovanovic weiss, louise wyman. guest appearance by hans ulrich obrist, denise scott brown, and robert venturi. design by sze tsung leong and chuihua judy chung.

www.harvard.edu



Copyrighted Material





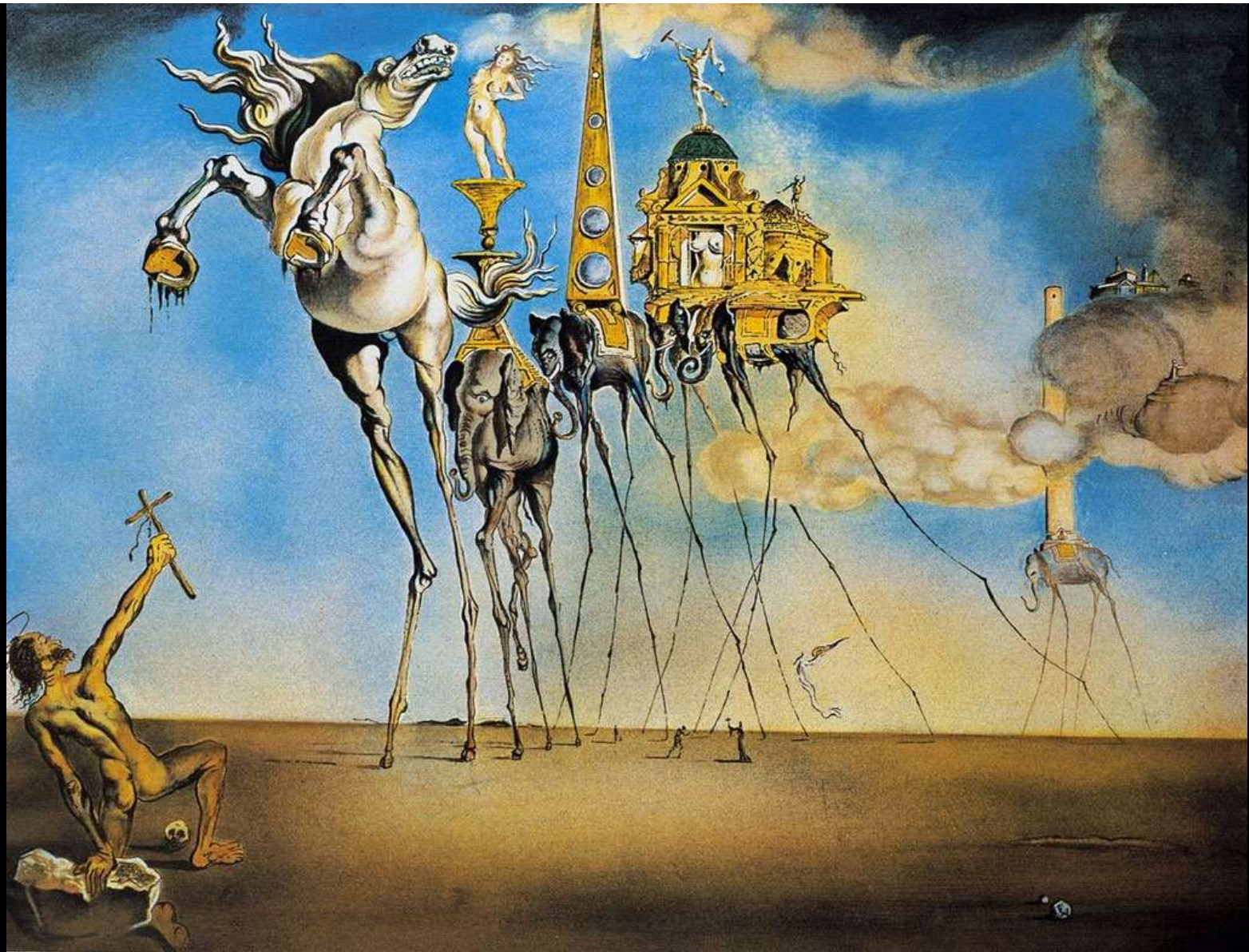
















reading room

mixing chamber

living room

kids



